



# Countertop Cooking



Catering Solutions | Versatile Products





# Countertop Cooking

## RANGE

Ideal for catering establishments that may be tight on space, the Burco Countertop Cooking range combines space effective units and high levels of performance with style and value for money. The range is perfect for all small restaurants, fast food outlets, pubs, bars, cafés, guesthouses and all other catering providers.

Combining a range of hobs, ovens, griddles and fryers, as well as a wide range of toasters for catering use, either front or back of house, the Burco Countertop Cooking range is designed to meet your needs.





## Buy with Confidence

We offer one of the best after-sales warranties within the catering sector! When you buy a Lec Commercial or Burco product, you can be sure you are also receiving our award-winning after-sales service and support. Our UK-based call centre is on hand 7 days a week, 363 days a year to answer any questions you may have. We also have a fleet of over 180 service engineers UK-wide, ensuring that in the unlikely event you encounter an issue with one of our appliances, one of our trained engineers can be with you quickly to help sort the problem out.

### The Burco Warranty

We have total confidence in the quality of our range of cooking and water boiling appliances, so much so that we offer a free 3 years parts, 1 year labour warranty as standard on **ALL** Burco products. Should you experience an issue with one of our appliances, simply call our helpline and our support team is on hand to assist you 7 days a week on **0844 815 3737**.

\* Conditions apply, see website for details

### Extend your warranty for added peace of mind\*

Glen Dimplex Professional Appliances has now launched a comprehensive extended warranty package enabling you to protect your product beyond our free of charge parts and labour warranty.

Call us today to find out more!

**0844 815 3742**

This package includes new for old replacement and offers reassurance in the current uncertain economic climate.

\* UK only



## Contents

|                             |    |
|-----------------------------|----|
| The Range at a Glance.....  | 04 |
| Plug and Go Range.....      | 06 |
| Pie Cabinet Range.....      | 12 |
| Grill Range.....            | 14 |
| Oven Range.....             | 16 |
| Toaster Range.....          | 22 |
| Product Specifications..... | 25 |





## COUNTERTOP COOKING

# Our range... at a glance

The ever-growing Burco countertop cooking range offers everything a caterer could need to create the best possible food.

Our hobs, ovens, grills, toasters and heated serving cabinets offer your business a range of straightforward, easy to use and easy to maintain equipment. All products are designed to be robust enough for use within a wide variety of busy catering establishments.



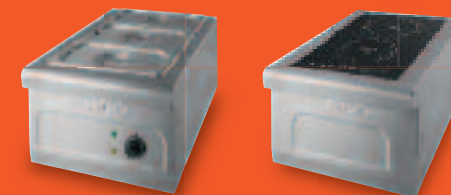
For more information about  
our countertop cooking range:

please call 0844 815 3742  
or visit [www.burco.co.uk](http://www.burco.co.uk)



## Plug and Go

Our flexible Plug and Go equipment range is completely modular, offering the user the option to select the components that best suit their business needs.



## Traditional Ovens

A vital component for most caterers, the ovens in our range vary in size, with many user-friendly features such as timers and flexible shelf heights.



## Microwave

The Burco Commercial microwave offers users a great range of features, all backed by our Commercial warranty.





## Grills

From everyday grilling in cafés, through to the juiciest steaks in Michelin star restaurants, our range is easy to use and offers great flexibility.



## Pie Cabinets

Ideal for keeping pies, pastries, baked goods and pizzas warm, Burco hot display cabinets offer great visibility of the contents and are easy to clean and maintain.



## Toasters

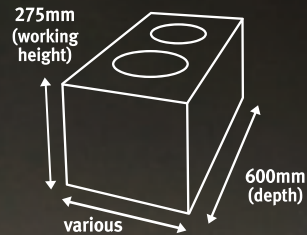
Ideal for front or back of house, the Burco range of toasters is perfect for those premises that need lots of toast.



# Plug and go...

Our Plug and Go countertop equipment range is easy to use and offers great performance. The units offer standard depth and working height dimensions, ensuring they fit together easily when required.

## Typical dimensions of a single piece



## IDEAL FOR:

- ✓ Cafés and restaurants
- ✓ Guesthouses
- ✓ Fast food outlets/takeaways
- ✓ Canteens

## Key features at a glance

- ✓ **Simple to use** – just plug in and you're ready to go
- ✓ **Easy to clean** and maintain
- ✓ **Flexible** – you can choose the components you need
- ✓ **Reliable and robust** – backed by our excellent warranty



As a suite...  
or separately



Electric Griddle  
PAGE 9



Boiling Top  
PAGE 9



Dry Heat Bain Marie  
PAGE 10



Induction Hob  
PAGE 7



Countertop Fryer  
PAGE 8

# Countertop Induction Hob

Induction hobs may cost a little more than traditional boiling tops, however, they can save you money over the life of the product in lower energy costs. With less heating of the surrounding environment, your kitchen will be a more comfortable place to work too.



- ✓ Save on your electricity bills
- ✓ Instant heat
- ✓ Simple touch control

**Two cooking zones (1.8kW and 1.2kW)** which are controlled independently for greater cooking flexibility

Hard-wearing **Schott glass surface** built to withstand the impact of large pans and any spills can be easily wiped away in seconds

**0-99 minute timer** for foods that need to be cooked slowly or kept simmering at low heat – ideal for soups and sauces

**UK 3-pin plug** – just plug in and get cooking

**Non-slip feet** for extra safety on the kitchen counter

**Touch controls** that are not only simple to operate but also easy to clean, maintaining high levels of hygiene



**WARRANTY**  
3 Years Parts\* 1 Year Labour

## Countertop Induction Hob

| Model  | SKU Code  | Dimensions<br>hxxxd (mm) | Weight<br>(kg) | Colour |
|--------|-----------|--------------------------|----------------|--------|
| CTIN01 | 444440541 | 275x400x600              | 12             | SS     |

## Save Money with Induction Technology

When it comes to running a commercial kitchen, keeping costs low and efficiency high is key. That's where the Burco induction hob really comes into its own. Offering not only instant heat for faster cooking times, its low energy consumption also means you can save money on your bills and there's even a built-in timer for convenience. Ideal for boiling, melting and simmering, the Burco induction hob can make a real difference in your kitchen.

### How does it save you money?

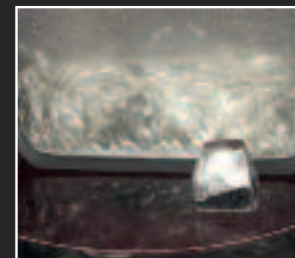
Induction cooking offers 90% energy efficiency compared to 50% on gas hob rings and 55% for electric, as very little energy is wasted into the surrounding air. This not only reduces cooking times but also means the air in the kitchen is kept much cooler, so you won't need your air conditioning as much either.

## Induction Technology

- Generates heat through electromagnetic technology
- Heats the pan, not the hob
- No heat wasted, unlike gas and electric hobs
- Quicker, more efficient cooking
- Works with flat based induction pans



*Induction - only heats the pan, not the ice cube*





## PLUG AND GO



## Plug and go range continued

All the main component pieces have a standard modular 600mm depth so you can fit the exact range and mix to suit your needs. Suiteing together seamlessly, all work off a fitted UK 3-pin plug.

Stainless steel construction makes them easy to clean, helping to maintain high standards of hygiene. Designed with safety in mind, all units have non-slip feet and, where applicable, strong handles and robust doors, built to withstand the busiest catering environment.



For more information about our countertop cooking range:

please call **0844 815 3742**  
or visit **www.burco.co.uk**

## Countertop Fryer

**Variable temperature range** operates between 30°C and 190°C

**Large capacity 6L tank** cooks up to 11kg chilled chips or 8kg frozen chips per hour

**Easy to clean** – lift the element using the specialist tool provided for easy cleaning inside the tank. Safety switch cuts power to the element automatically when element is raised

**Always turn off any electrical appliance at the mains before cleaning**

**Safety lever** – no danger of hot fat draining accidentally. Lock mechanism must be moved before lever will open the drainage hole

**Wire basket, drain pipe and element lifting tool included**



### Countertop Fryer

| Model  | SKU Code  | Dimensions<br>hxxwx d (mm) | Weight<br>(kg) | Colour |
|--------|-----------|----------------------------|----------------|--------|
| CTFR01 | 444449315 | 275x300x600                | 12.2           | SS     |

### Drain old fat away easily and safely

Connect the supplied pipe, open the safety valve and drain tank of old fat or oil easily



Connect pipe



Move lever



Drain cooled fat

**Always allow hot fat to cool before emptying**

# Countertop Griddle

- ✓ **Easy to keep clean**  
single piece machined steel plated griddle, no awkward joins for dirt to stick
- ✓ **Even griddle surface temperature**  
for consistent and even cooking results every time
- ✓ **Specialist design**  
allows fat to drain away from food
- ✓ **Large removable fat collection drawer**  
for safe and easy disposal
- ✓ **Variable temperature selector**  
100°C to 280°C
- ✓ **Power on and heating up indicators**



## Countertop Griddle

| Model  | SKU Code  | Dimensions<br>hxxxd (mm) | Weight<br>(kg) | Colour |
|--------|-----------|--------------------------|----------------|--------|
| CTGD01 | 444449316 | 300x600x600              | 42.2           | SS     |



**WARRANTY**  
3 Years  
Parts \* 1 Year  
Labour

# Countertop Boiling Top

- ✓ **Two 1.5kW sealed hotplates**  
can be used simultaneously to increase food output
- ✓ **Independent variable controls**  
operate each hotplate separately between 60°C and 220°C
- ✓ **One piece pressed hob**  
collects any spillages, which can be wiped away in seconds
- ✓ **Power on and heating up indicators**



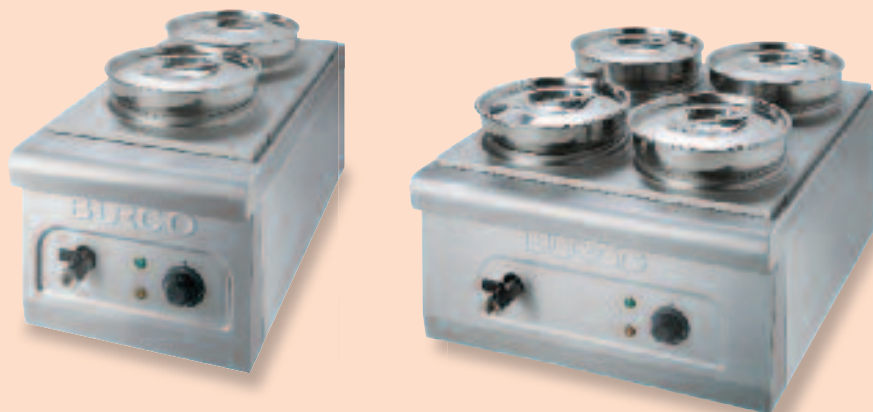
## Countertop Boiling Top

| Model  | SKU Code  | Dimensions<br>hxxxd (mm) | Weight<br>(kg) | Colour |
|--------|-----------|--------------------------|----------------|--------|
| CTBT01 | 444449314 | 275x300x600              | 10             | SS     |



PLUG AND GO

**AVAILABLE SPRING 2012**  
CONTACT US FOR AVAILABILITY DATES



## Coming Soon Wet Pot Bain Marie

- ✓ 1000W element  
heats water quickly to required temperature
- ✓ Available as 2 or 4 pot option
- ✓ Each pot has a 4.2L capacity
- ✓ Front access drain valve  
makes emptying the unit simple



### Countertop Wet Pot Bain Marie

| Model | SKU Code  | Dimensions<br>hwxwd (mm) | Weight<br>(kg) | Colour |
|-------|-----------|--------------------------|----------------|--------|
| 2 Pot | 444442144 | 360x300x600              | 11             | SS     |
| 4 Pot | 444442145 | 360x500x600              | 18             | SS     |



For more information about our countertop cooking range:  
please call 0844 815 3742 or visit [www.burco.co.uk](http://www.burco.co.uk)

## Countertop Dry Heat Bain Marie

- ✓ No emptying required
- ✓ 1/3 Gastronorm trays



500W  
element  
heats the tray  
from below



Front  
positioned  
variable heat  
control

Gastronorm  
pans and lids  
supplied



### Countertop Dry Heat Bain Marie

| Model  | SKU Code  | Dimensions<br>hwxwd (mm) | Weight<br>(kg) | Colour |
|--------|-----------|--------------------------|----------------|--------|
| CTBM01 | 444449317 | 275x400x600              | 14.4           | SS     |

### IDEAL FOR:

- ✓ Soups and sauces
- ✓ Front of house serving



# Multifunction Cooker

- ✓ Can cook various food types easily such as rice, or steam fish and vegetables, warm sauces or keep over 10 litres of soup warm
- ✓ Automatically switches to “keep warm” mode once it’s finished cooking
- ✓ Removable non-stick inner bowl

## IDEAL FOR:

- ✓ Rice
- ✓ Soups
- ✓ Chilli
- ✓ Steamed fish
- ✓ Steamed vegetables

**WARRANTY**  
3 Years Parts \* 1 Year Labour



Complete with:  
Steamer insert, measuring  
cup and two spatulas



## Multifunction Cooker

| Model  | SKU Code  | Dimensions<br>h x w x d (mm) | Weight<br>(kg) | Colour |
|--------|-----------|------------------------------|----------------|--------|
| CTRC01 | 444448549 | 335x370x440                  | 10.6           | SS     |



## COUNTERTOP COOKING



# Hot Display/ Servery

MADE IN UK 

### NEW Pie Cabinet Range

The new range of Burco Hot Display Cabinets offers simple and easy to use units allowing you to store and hold many types of pies, pasties, pastries and pizzas at the ideal temperature. There are two sizes to choose from – our larger 60 capacity unit for higher volume storage, as well as a more portable 20 capacity unit for outlets requiring a smaller and more space efficient product. The 20 capacity model has conveniently been designed and built to hold a 12” pizza for even greater versatility.



For more information about our countertop cooking range:

please call **0844 815 3742**  
or visit **[www.burco.co.uk](http://www.burco.co.uk)**

## 60 Pie Capacity



Our Pie Cabinets can be personalised with your own brands  
Please contact us for details



## 20 Pie Capacity



- ✓ Large internal capacities
- ✓ Flexible shelf heights to accommodate different pies and pastries
- ✓ Easy to keep clean and maintain
- ✓ Water reservoir to prevent contents from drying out



### Pie Cabinets

| Model | SKU Code  | Dimensions<br>hxxxd (mm) | Weight<br>(kg) | Colour |
|-------|-----------|--------------------------|----------------|--------|
| PC60  | 444441031 | 420x740x410              | 24.6           | SS     |
| PC20  | 444441030 | 420x405x410              | 16.2           | SS     |



# Our Pie Cabinets - key features explained

**Strong stainless steel construction** Sturdy, hygienic and easy to clean

**Large capacity interior**  
We guarantee this unit will hold 60 standard pies (based on pies 108mm diameter)

**3 wire shelves with flexible shelf heights** – offers total flexibility by enabling you to easily vary the height of the shelves to accommodate a wide variety of products with differing heights from slices through to taller pies

**Removable crumb trays**  
These trays have been specially designed to catch any crumbs or debris falling through the base to prevent them falling on the element. Simply pull them out, wipe clean then slide back in



**Removable element cover**  
Allows you to take out and clean quickly and easily when the unit has cooled



**Non-slip feet**  
A safety feature to ensure the unit doesn't move easily when sited on a counter

**Easy to remove toughened safety glass**  
Maintains heat in the cabinet but is strong enough to be removed regularly for cleaning

**Powerful 800W element**  
Heats the interior and ensures your pies and pastries are kept warm

**Indicator lights**  
Two neon lights indicate when the unit is switched on and heating up

**WARRANTY**  
3 Years Parts \* 1 Year Labour

**Sliding, easy-clean doors with large stay-cool knob**  
Simply plug into the mains and you're ready to go



**Water reservoir**  
Keep filled to minimise the possibility of the pastry inside becoming too dry. Also easy to remove and clean



**Moulded 3-pin plug fitted as standard**  
Simply plug into the mains and you're ready to go

**Internal light**  
Illuminated interior allows good visibility without needing to open doors



**Variable temperature setting**  
Adjust this dial to your required internal temperature (30° to 85°C range)



MADE IN UK 



## GRILLS



**USES  
LESS GAS  
THAN A STANDARD  
CHAR-GRILL**



# Synergy Grill

The Burco Synergy grill is the world's first atomising char-grill, offering improved quality food, higher efficiency and enhanced safety.

### How it works:

- No fat tray means a reduced risk of fire as no combustible hot grease or oil sits in the unit
- The high temperature generated from the gas burner heats the ceramics, focuses heat towards the grill and vaporises fat into a fine mist, which is blasted back to the underside of the food, keeping it moist and flavoursome
- Because no combustible fat makes it to the grill base, flames are almost eliminated, removing that charcoal taste and reducing the risk of a fat fire to almost zero

Check out our demo video at [www.burco.co.uk/synergyvideo](http://www.burco.co.uk/synergyvideo)



For more information about our countertop cooking range:

please call 0844 815 3742  
or visit [www.burco.co.uk](http://www.burco.co.uk)

## The World's First Atomising Char-grill

- ✓ Cooks food faster
- ✓ Switch off between use re-heats rapidly
- ✓ No fat tray to empty safer and less waste

**Flexible grilling area** – atomising technology ensures no cross-flavouring contamination, so you can cook different meats, fish and chicken simultaneously



**Easy tilt rack** enables food to be cooked at different temperatures

**Safety cut off** for the gas to the burner in the event of supply failure

**Internal ceramic plate** retains heat for up to an hour, meaning you can switch off between uses as it takes little time to get back to temperature, saving valuable energy

**Stainless steel sides** remain cool to touch due to the grill's air flow system for added safety in a busy commercial kitchen



### Synergy Grill

| Model  | SKU Code  | Dimensions<br>h x w x d (mm) | Weight<br>(kg) | Colour |
|--------|-----------|------------------------------|----------------|--------|
| SYNG01 | 444449877 | 360x450x600                  | 43             | SS     |

**One touch operation** – the unit starts heating up at the flick of a switch

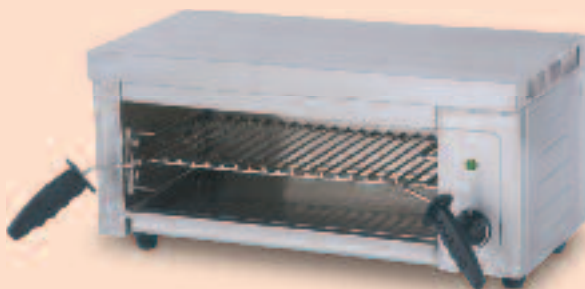


## Other Countertop Grills Available...

**WARRANTY**  
3 Years  
Parts\* 1 Year  
Labour

### Electric Salamander Grill

- ✓ 100°C to 260°C variable temperature range
- ✓ 3 adjustable shelf heights
- ✓ Slide out base fat collection tray
- ✓ Removable splashguard above element
- ✓ Easy-clean cavity
- ✓ 2.8kW element
- ✓ Can be wall mounted (brackets included)

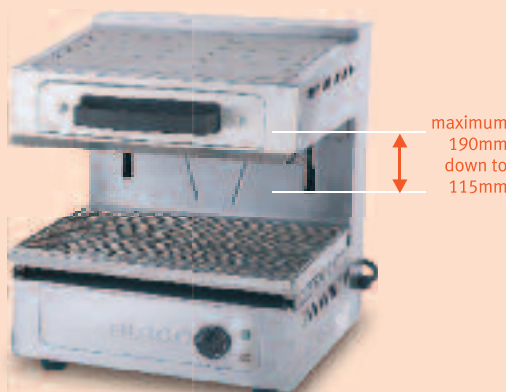


#### Electric Salamander Grill

| Model  | SKU Code  | Dimensions<br>hxxxd (mm) | Weight<br>(kg) | Colour |
|--------|-----------|--------------------------|----------------|--------|
| CTGL01 | 444448736 | 294x610x430              | 16.4           | SS     |

### Adjustable Salamander Grill

- ✓ High quality, easy lift mechanism
- ✓ 100°C to 300°C adjustable temperature range
- ✓ 2.8kW element
- ✓ Slide out fat collection tray for easy cleaning
- ✓ Rise and fall cavity height, maximum 190mm down to 115mm



#### Adjustable Salamander Grill

| Model  | SKU Code  | Dimensions<br>hxxxd (mm) | Weight<br>(kg) | Colour |
|--------|-----------|--------------------------|----------------|--------|
| CTAS01 | 444448737 | 530x470x525              | 39.2           | SS     |





## OVENS

# Large Convection Oven

Our large Burco Convection Oven offers great flexibility – it bakes, roasts, grills and broils and can hold food at set temperatures once it's finished cooking. It's ideal for a wide variety of foods.

**4x 1/1 Gastronorm Compatible**



**BURCO**  
COMMERCIAL





For more information about  
our countertop cooking range:  
please call **0844 815 3742**  
or visit **[www.burco.co.uk](http://www.burco.co.uk)**



We also offer a  
specially  
designed stand  
for our large  
convection oven



## IDEAL FOR:

-  Joints of meat
-  Baked goods
-  Pizzas
-  Vegetables



### Large Convection Oven

| Model                     | SKU Code  | Dimensions<br>hwxwd (mm) | Weight<br>(kg) | Colour |
|---------------------------|-----------|--------------------------|----------------|--------|
| <b>Oven</b><br>CTC001     | 444440542 | 580x800x600              | 71             | SS     |
| <b>Stand</b><br>CTC001STD | 444441579 | 700x800x600              | 16.5           | SS     |

- ✓ **Sturdy stainless steel construction**
- ✓ **Easy wipe clean interior**  
to accommodate different pies and pastries
- ✓ **Toughened twin-pane glass door**  
built to withstand the busiest cooking kitchens
- ✓ **UK 3-pin plug**  
so you can just plug in and get cooking to  
prevent contents from drying out





- ✓ 50°C to 300°C temperature range
- ✓ 4 shelves  
with 7 adjustable shelf positions
- ✓ Large 108L capacity  
holds 4x 1/1 Gastronorm trays
- ✓ Fan assisted cooking  
for even temperature distribution and faster cooking results
- ✓ Internal oven light  
allows you to check progress of food cooking without having to open the door
- ✓ 0-60 minute timer  
plus 0-180 minute cook and hold timer

### Cook and hold function explained

For no-fuss operation – simply programme the oven to cook the food required, then use the cook and hold function to keep the items at the required temperature ready to serve



## OVENS



MADE IN UK



# Countertop Convection Oven

Ideal for all bakery products, pizzas, pies and roasts, the fan assisted oven heats quickly and offers great heat distribution, which guarantees rapid cooking times and outstanding results.

**2/3 Gastronorm Compatible**



For more information about our countertop cooking range:

please call **0844 815 3742**  
or visit **[www.burco.co.uk](http://www.burco.co.uk)**



**WARRANTY**  
**3 Years Parts\* 1 Year Labour**



### Countertop Convection Oven

| Model  | SKU Code  | Dimensions<br>hxxxd (mm) | Weight<br>(kg) | Colour |
|--------|-----------|--------------------------|----------------|--------|
| CTC002 | 444441151 | 375x615x615              | 24             | SS     |

### IDEAL FOR:

- ✓ Cafés
- ✓ Pubs
- ✓ Bars
- ✓ B&B's
- ✓ Guesthouses

- ✓ **2.5kW power**  
for even heat distribution and great results
- ✓ **0°C to 250°C variable temperature range**  
for great flexibility
- ✓ **59L internal capacity**
- ✓ **Internal light**  
allows you to monitor cooking progress without opening the door
- ✓ **Drop-down door**  
with removable glass for thorough cleaning
- ✓ **2 shelves, 4 variable shelf positions**



MADE IN UK 



**59 litre oven capacity (gross)**  
enough space for a wide assortment  
of foods, fits 2/3 Gastronorm trays

**0-120 minute timer**  
for a wide range of cooking styles  
from warming to slow roasting

**Drop down oven door**  
for easy oven access

**Removable door glass**  
for easy cleaning

**UK 3-pin plug** – just plug in and  
start cooking straight away

**Non-slip, adjustable  
feet** for added safety



## OVENS

# Commercial 1000W Microwave

The Burco 1000W Microwave is a valuable piece of equipment for any professional kitchen, allowing you to perform essential functions such as safely reheating frozen or chilled food.

The microwave is built to withstand hard use every day and to a high specification – making it fast, efficient and extremely hard working.

Offering sophisticated cooking programmes and push-button pre-sets, the Burco 1000W Microwave allows staff at all levels to operate it easily and effectively.

- ✓ **Large 25L capacity**  
compatible with 1/2 Gastronorm sized pans and can accommodate most plate and bowl sizes
- ✓ **Sturdy stainless steel construction**
- ✓ **0-99 minute 99 second timer**  
allows you to programme the required cooking time

**1/2 Gastronorm  
Compatible**



For more information about  
our countertop cooking range:  
please call **0844 815 3742**  
or visit **www.burco.co.uk**

**Large 25 litre capacity**  
compatible with 1/2  
Gastronorm pans and can  
accommodate most standard  
plate and bowl sizes

**Interior light**  
allows you to  
monitor  
progress during  
cooking

**Counter check** – you can read the count of  
how many times the oven has been used,  
which allows you to analyse the usage of the  
oven and the traffic flow to a particular  
location or a set time the oven is being used

**Touch button  
control**, easy to use  
and wipe clean

**Sealed in base**  
for easy cleaning

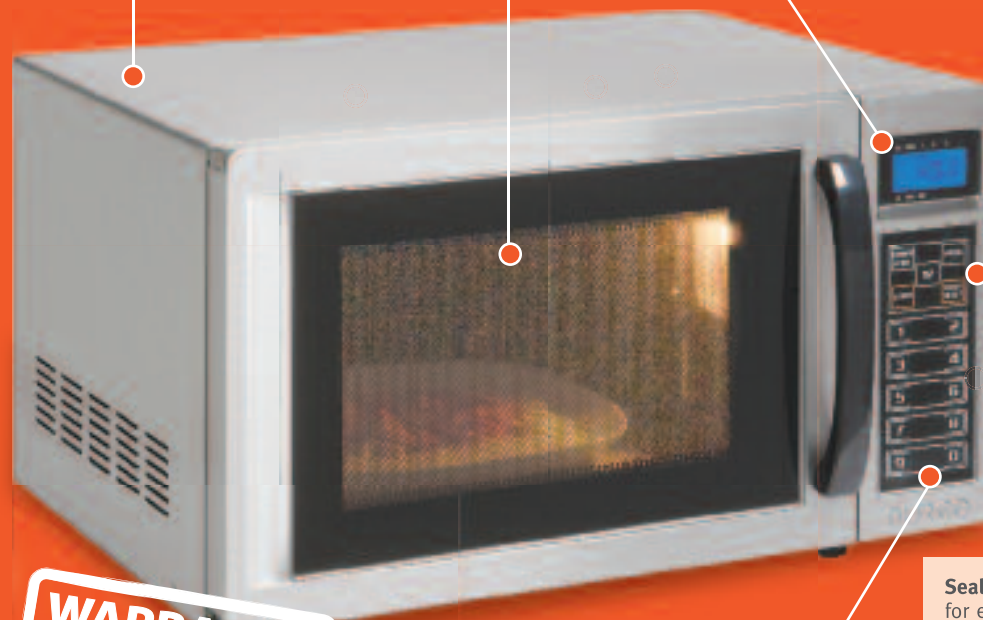
**WARRANTY**  
**3 Years**  
**Parts\*** **1 Years**  
**Labour**



## Commercial 1000W Microwave

| Model  | SKU Code  | Dimensions<br>hxxxd (mm) | Weight<br>(kg) | Colour |
|--------|-----------|--------------------------|----------------|--------|
| CTMW01 | 444441097 | 312x520x435              | 18             | SS     |

**10 programmable memory pads  
and 20 memory capacity** – for a  
frequently used cooking  
programme, you can save it to a  
number key and conveniently  
activate it at the touch of a  
button. More cooking  
programmes can be stored  
under the number keys







## Commercial Baby Belling

Ideal for those looking to provide a basic food offering, the commercialised version of the iconic Baby Belling offers flexible cooking performance when space is limited.



MADE IN UK 



We also offer a stand for our Baby Belling

### IDEAL FOR:

- ✓ Baking
- ✓ Heating
- ✓ Grilling



### Features include:

- ✓ **Easy to clean**  
enamelled steel body and removable oven roof for cleaning access
- ✓ **Two independent hotplates**  
offer variable control and maximum cooking flexibility
- ✓ **Variable oven temperature**  
operates between 70°C and 245°C for full on roasting, or just keeping food warm
- ✓ **Power on and heating up indicators**
- ✓ **Reinforced stainless steel door** designed to cope with a busy commercial environment
- ✓ **Fixed grill**  
offers an additional mode of cooking
- ✓ **Fitted UK plug**  
simply plug in and you're ready to get cooking



### Commercial Baby Belling

| Model        | SKU Code  | Dimensions<br>hxxwxd (mm) | Weight<br>(kg) | Colour |
|--------------|-----------|---------------------------|----------------|--------|
| BBEL01SS     | 444440915 | 409x482x430               | 23             | SS     |
| BBEZ420STAND | 444440337 | 532x482x419               | 5              | SS     |

## TOASTERS

# 4 and 6 Slot Toasters

Burco's 4 and 6 slot heavy duty toasters offer the ideal solution when large volumes of toast are needed. Now available in a range of colour options, the toasters feature a variable slot selector, which allows you to operate either 2 slots in the 4 slot toaster, or 3 in the 6. This offers added versatility and uses less power in those quieter periods, saving money on your energy bills. Also, the adjustable timer control enables you to select the perfect shade of toast to suit your customers' needs.



For more information about our countertop cooking range:  
please call 0844 815 3742  
or visit [www.burco.co.uk](http://www.burco.co.uk)

## 6 Slot Toaster

- ✓ 3kW element
- ✓ Available with a choice of coloured ends
- ✓ Ideal for front or back of house use
- ✓ Variable timer 0-5 minutes
- ✓ Sturdy steel construction

**Extra wide slots**  
for thicker slices of bread, crumpets and muffins

**Removable crumb tray**  
for easy cleaning



**High-lift mechanism**  
makes it easy and safe to retrieve all kinds of bread types



**Variable timer control**  
enables you to adjust the timer to the desired browning time so you can get the perfect shade of toast

**Non-slip feet**  
for greater safety on your kitchen surface



### 6 Slot Toaster

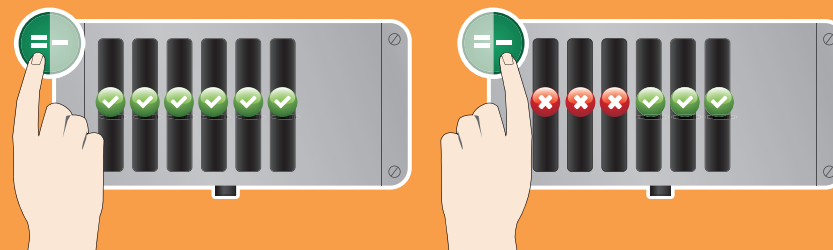
| Model      | SKU Code  | Dimensions<br>hxxd (mm) | Weight<br>(kg) | Colour |
|------------|-----------|-------------------------|----------------|--------|
| TSSL16 CHR | 444441582 | 220x480x270             | 6              | CHROME |

UP TO  
**180  
SLICES  
PER  
HOUR**

### Our variable slot selector explained...



Energy efficient variable slot selector switches between all slots working, or just half for quieter times





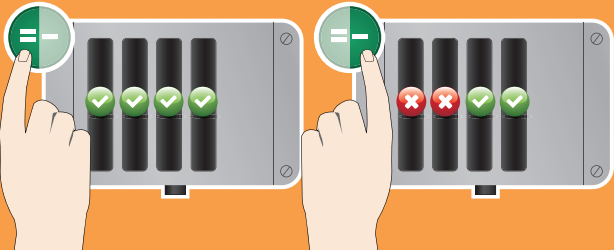
# 4 Slot Toaster

- ✓ 2.4kW element
- ✓ Variable slot selector – 2 or 4 slot mode
- ✓ Available with a choice of coloured ends
- ✓ Ideal for front or back of house use
- ✓ Sturdy steel construction



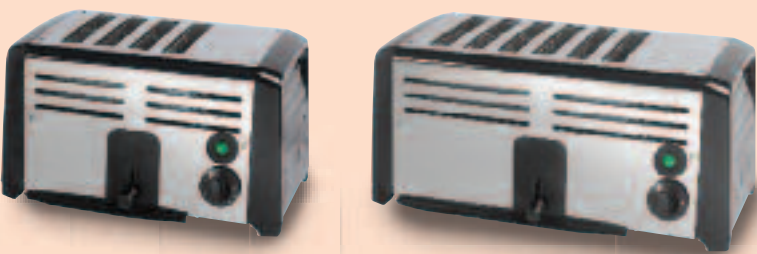
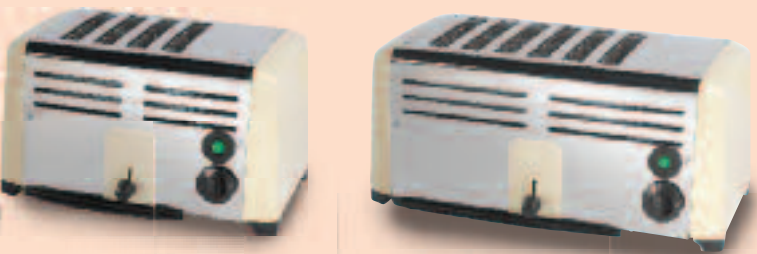
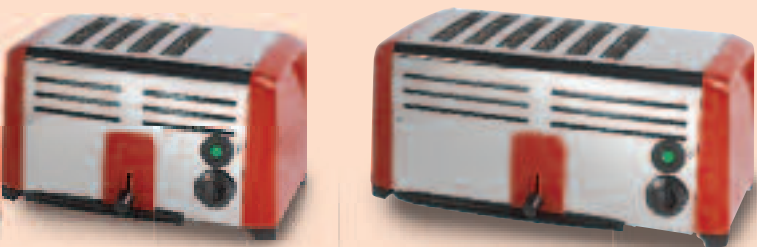
## 4 Slot Toaster

| Model      | SKU Code  | Dimensions<br>hxxxd (mm) | Weight<br>(kg) | Colour |
|------------|-----------|--------------------------|----------------|--------|
| TSSL14 CHR | 444441581 | 220x380x270              | 5              | CHROME |



# Colour Options...

Our 4 and 6 slot toasters are available with a choice of stylish coloured ends. Simply pick the one that best suits you.



**WARRANTY**  
3 Years Parts\* 1 Year Labour

\*Replacement toaster elements are **not** covered by our warranty.

| Model                 | SKU Code  | Dimensions<br>hxxxd (mm) | Weight<br>(kg) |
|-----------------------|-----------|--------------------------|----------------|
| <b>4 Slot Toaster</b> |           |                          |                |
| TSSL14 RED            | 444440606 | 220x380x270              | 5              |
| <b>6 Slot Toaster</b> |           |                          |                |
| TSSL14 RED            | 444440608 | 220x480x270              | 6              |

| Model                 | SKU Code  | Dimensions<br>hxxxd (mm) | Weight<br>(kg) |
|-----------------------|-----------|--------------------------|----------------|
| <b>4 Slot Toaster</b> |           |                          |                |
| TSSL14 CRM            | 444440607 | 220x380x270              | 5              |
| <b>6 Slot Toaster</b> |           |                          |                |
| TSSL14 CRM            | 444440609 | 220x480x270              | 6              |

| Model                 | SKU Code  | Dimensions<br>hxxxd (mm) | Weight<br>(kg) |
|-----------------------|-----------|--------------------------|----------------|
| <b>4 Slot Toaster</b> |           |                          |                |
| TSSL14 BLK            | 444440980 | 220x380x270              | 5              |
| <b>6 Slot Toaster</b> |           |                          |                |
| TSSL14 BLK            | 444440981 | 220x480x270              | 6              |

## TOASTERS

# Conveyor Toaster

Our truly versatile Conveyor Toaster is perfect for front or back of house use, providing a high hourly output, and is suitable for a wide variety of bread products and baked goods.

- ✓ **Up to 400 slices per hour output**
- ✓ **Energy efficient economy mode**  
reduces the power by 50% for those quieter periods
- ✓ **Easy-fit tamper-resistant cover**  
ideal for when used front of house, the caterer can select the perfect toasting setting and cover up again
- ✓ **Element selection dial**  
so you can choose between single and double sided toasting
- ✓ **Variable shade selection/speed control**  
enable the user to select the perfect shade of toast by simply adjusting the dial



Concealed element selection dial



Tamper-resistant cover



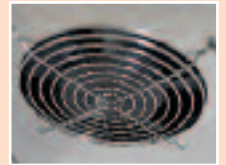
For more information about our countertop cooking range:  
please call **0844 815 3742**  
or visit **[www.burco.co.uk](http://www.burco.co.uk)**



UP TO  
400  
SLICES  
PER  
HOUR

### IDEAL FOR:

- ✓ Bagels
- ✓ Slices
- ✓ Muffins
- ✓ Crumpets



**Internal cooling fan**  
prevents external surfaces from overheating



**Removable crumb tray**  
makes cleaning quick and easy



**Front or rear chute**  
eject option making the unit suitable for both front and back of house

### Conveyor Toaster



| Model   | SKU Code  | Dimensions<br>h x w x d (mm) | Weight<br>(kg) | Colour |
|---------|-----------|------------------------------|----------------|--------|
| TCCNV01 | 444448554 | 420x365x575                  | 17.2           | SS     |






LAUNCH SPRING 2012

| Plug and Go Range<br>Model Number       | Induction Hob<br>CTIN01 | Boiling Top<br>CTBT01                              | Fryer<br>CTFR01 | Electric Griddle<br>CTGD01 | Dry Heat Bain Marie<br>CTBM01 | Wet Pot Bain Marie<br>4 POT | Wet Pot Bain Marie<br>2 POT | Multifunction Cooker<br>CTRC01         |
|---|-------------------------|--|-----------------|----------------------------|-------------------------------|-----------------------------|-----------------------------|--|
| SKU code                                | 444440541               | 444449314  | 444449315       | 444449316                  | 444449317                     | 444442145                   | 444442144                   | 444448549                              |
| Barcode                                 | 5052263005419           | 5034648493141                                      | 5034648493158   | 5034648493165              | 5034648493172                 | 5052263021457               | 5052263021440               | 5011832019523                          |
| Product dimensions (mm) (wxdxh)         | 400x600x275             | 300x600x275  | 300x600x275     | 600x600x300                | 400x600x275                   | 500x600x360                 | 300x600x360                 | 370x440x335                            |
| Packed dimensions (mm) (wxdxh)          | 465x680x415             | 370x690x420  | 370x685x415     | 690x690x430                | 465x680x415                   | 560x685x410                 | 360x685x410                 | 470x470x420                            |
| Product weight (kg)                     | 12                      | 10   | 12.2            | 42.2                       | 14.4                          | 18                          | 11                          | 10.6                                   |
| Packed weight (kg)                      | 14.5                    | 11.8   | 14.2            | 48.2                       | 16.6                          | 19                          | 11.5                        | 13                                     |
| Variable control                        | Yes                     | Yes  | Yes             | Yes                        | Yes                           | Yes                         | Yes                         | Yes                                    |
| Easy clean stainless steel construction | Yes                     | Yes  | Yes             | Yes                        | Yes                           | Yes                         | Yes                         | Yes                                    |
| Power on indicator light                | -                       | Yes  | Yes             | Yes                        | Yes                           | Yes                         | Yes                         | Yes                                    |
| Non slip feet for safety                | Yes                     | Yes  | Yes             | Yes                        | Yes                           | Yes                         | Yes                         | Yes                                    |
| Power rating (kW)                       | 3.1                     | 3 (2x 1.5)   | 3               | 3                          | 0.5                           | 1                           | 1                           | 1.95                                   |
| Voltage supply (V)                      | 220/240                 | 220/240  | 220/240         | 220/240                    | 220/240                       | 220/240                     | 220/240                     | 220/240                                |
| UK 3 pin plug                           | Yes                     | Yes  | Yes             | Yes                        | Yes                           | Yes                         | Yes                         | Yes                                    |
| Fitted cable length (M)                 | 0.7                     | 0.7  | 0.7             | 0.7                        | 0.7                           | 0.7                         | 0.7                         | 0.7                                    |
| Material                                | Stainless steel         | Stainless steel                                    | Stainless steel | Stainless steel            | Stainless steel               | Stainless steel             | Stainless steel             | Stainless steel                        |
| Gastronorm trays                        | -                       | -  | -               | -                          | Yes (3x 1/3)                  | -                           | -                           | -                                      |
| Capacity                                | -                       | -  | -               | -                          | 3 trays, each 6.75L           | 4.2L per pot                | 4.2L per pot                | 6L rice, pasta/10L soup                |
| Removable non-stick inner bowl          | -                       | -  | -               | -                          | -                             | -                           | -                           | Yes                                    |
| One touch operation                     | -                       | -  | -               | -                          | -                             | -                           | -                           | Yes                                    |
| Thermal protection                      | -                       | -  | -               | -                          | -                             | -                           | -                           | Yes                                    |
| Contents                                | -                       | - Wire basket, drain tool,<br>element lifting tool | -               | -                          | -                             | -                           | -                           | Includes measuring<br>cup + 2 spatulas |
| Max heat up time (mins)                 | Instant                 | up to 10   | up to 10        | up to 10                   | up to 15                      | 140 minutes (to 85°C)       | 75 minutes (to 85°C)        | up to 5                                |
| Grilling surface area (mm) (wxd)        | -                       | -  | -               | 535x368                    | -                             | -                           | -                           | -                                      |
| Removable fat collection drawer         | -                       | -  | -               | Yes                        | -                             | -                           | -                           | -                                      |
| Plate temperature range                 | 60 - 240°C              | 60 - 220°C   | -               | 100 - 280°C                | -                             | -                           | -                           | -                                      |
| Temperature range                       | -                       | -  | 30 - 190°C      | -                          | -                             | -                           | -                           | -                                      |
| Heat up indicator light                 | -                       | Yes  | -               | Yes                        | -                             | -                           | -                           | -                                      |
| Touch control                           | Yes                     | -  | -               | -                          | -                             | -                           | -                           | -                                      |
| Even heat distribution                  | Yes                     | Yes  | -               | Yes                        | -                             | -                           | -                           | -                                      |
| Power rating each hotplate (kW)         | 1x 1.8/1x 1.2           | 2x 1.5   | -               | -                          | -                             | -                           | -                           | -                                      |
| Drainage tap diameter                   | -                       | -  | 12mm ( 1/2")    | -                          | -                             | 10                          | 10                          | -                                      |
| Max water capacity (L)                  | -                       | -  | -               | -                          | -                             | 22                          | 11                          | -                                      |
| Tank capacity                           | -                       | -  | 6               | -                          | -                             | -                           | -                           | -                                      |
| Tank dimensions (mm) (wxdxh)            | -                       | -  | 238x188x298     | -                          | -                             | -                           | -                           | -                                      |
| Basket size (mm) (wxdxh)                | -                       | -  | 191x140x232     | -                          | -                             | -                           | -                           | -                                      |
| Hinged element                          | -                       | -  | Yes             | -                          | -                             | -                           | -                           | -                                      |
| Safety cut out                          | -                       | -  | Yes             | -                          | -                             | -                           | -                           | -                                      |

| Hot Display/Servery   |                                   |  |
|---|-----------------------------------|--|
| Model Number  |                                   |  |
|   |                                   |  |
| Pie Cabinet - 20 Capacity<br>PC20   | Pie Cabinet - 60 Capacity<br>PC60 |  |
| SKU code  |                                   |  |
| 444441030   |                                   |  |
| Barcode   |                                   |  |
| 5052263010307   |                                   |  |
| 5052263010314   |                                   |  |
| Product dimensions (mm) (wxdxh)   |                                   |  |
| 405x410x420   |                                   |  |
| 740x410x420   |                                   |  |
| Packed dimensions (mm) (wxdxh)  |                                   |  |
| 450x530x460   |                                   |  |
| 780x530x460   |                                   |  |
| Product weight (kg)   |                                   |  |
| 16.2  |                                   |  |
| 24.6  |                                   |  |
| Packed weight (kg)  |                                   |  |
| 17.9  |                                   |  |
| 27  |                                   |  |
| Pie capacity (based on 108mm diameter pie)  |                                   |  |
| 20  |                                   |  |
| 60  |                                   |  |
| Removable crumb tray(s)   |                                   |  |
| Yes (x1)  |                                   |  |
| Yes (x2)  |                                   |  |
| Temperature range   |                                   |  |
| 30 - 85°C   |                                   |  |
| 30 - 85°C   |                                   |  |
| Number of shelves/shelf positions   |                                   |  |
| 3/12  |                                   |  |
| 3/12  |                                   |  |
| Door type   |                                   |  |
| Hinged  |                                   |  |
| Sliding   |                                   |  |
| Internal light  |                                   |  |
| Yes (15W)   |                                   |  |
| Yes (15W)   |                                   |  |
| Bulb type   |                                   |  |
| SES   |                                   |  |
| SES   |                                   |  |
| Non slip feet for safety  |                                   |  |
| Yes   |                                   |  |
| Yes   |                                   |  |
| Power rating (kW)   |                                   |  |
| 0.4   |                                   |  |
| 0.8   |                                   |  |
| Voltage supply (V)  |                                   |  |
| 220/240   |                                   |  |
| 220/240   |                                   |  |
| UK 3 pin plug   |                                   |  |
| Yes   |                                   |  |
| Yes   |                                   |  |
| Fitted cable length (M)   |                                   |  |
| 1.7   |                                   |  |
| 1.7   |                                   |  |

| Synergy Grill   |  |
|---|--|
| Model Number  |  |
|  |  |
| Synergy Grill<br>SYNG01   |  |
| SKU code  |  |
| 444449877   |  |
| Barcode   |  |
| 5034700498770   |  |
| Product dimensions (mm) (wxdxh)   |  |
| 450x600x360   |  |
| Packed dimensions (mm) (wxdxh)  |  |
| 570x650x520   |  |
| Product weight (kg)   |  |
| 43  |  |
| Packed weight (kg)  |  |
| 48  |  |
| Cooking grid dimensions (mm) (wxd)  |  |
| 440x480   |  |
| Gas type  |  |
| Natural gas (convertible to LPG)  |  |
| Natural gas power rating  |  |
| 5.7kW/19,462 BTU  |  |
| LPG power rating  |  |
| 7.5 kW/25,608 BTU   |  |
| Gas pressure (mb)   |  |
| Natural gas 20 / LPG 37   |  |
| Inlet connection  |  |
| 1/4" BSP female   |  |
| Electrical power rating (kW)  |  |
| <1  |  |
| Voltage supply (V)  |  |
| 220/240   |  |
| Adjustable feet   |  |
| Yes (+0-20mm)   |  |
| UK 3 pin plug   |  |
| Yes   |  |
| Fitted cable length (M)   |  |
| 1.5   |  |

| Countertop Grilling   |                                       |  |
|---|---------------------------------------|--|
| Model Number  |                                       |  |
|   |                                       |  |
| Electric Salamander Grill<br>CTGL01   | Adjustable Salamander Grill<br>CTAS01 |  |
| SKU code  |                                       |  |
| 444448736   |                                       |  |
| 444448737   |                                       |  |
| Barcode   |                                       |  |
| 5034648487362   |                                       |  |
| 5034648487379   |                                       |  |
| Product dimensions (mm) (wxdxh) inc handles   |                                       |  |
| 610x430x294   |                                       |  |
| 470x525x530   |                                       |  |
| Product dimensions (mm) (wxdxh) excl handles  |                                       |  |
| 610x330x294   |                                       |  |
| 470x480x530   |                                       |  |
| Packed dimensions (mm) (wxdxh)  |                                       |  |
| 705x395x340   |                                       |  |
| 590x580x600   |                                       |  |
| Product weight (kg)   |                                       |  |
| 16.4  |                                       |  |
| 39.2  |                                       |  |
| Packed weight (kg)  |                                       |  |
| 17.8  |                                       |  |
| 42.4  |                                       |  |
| Material  |                                       |  |
| Stainless steel   |                                       |  |
| Stainless steel   |                                       |  |
| Usable shelf surface area (mm) (wxd)  |                                       |  |
| 420x240   |                                       |  |
| 425x315   |                                       |  |
| Maximum heat up time (mins)   |                                       |  |
| 5   |                                       |  |
| 5   |                                       |  |
| Temperature range under grill   |                                       |  |
| 100 - 260°C   |                                       |  |
| 100 - 300°C   |                                       |  |
| Rise and fall cavity height (mm)  |                                       |  |
| -   |                                       |  |
| 190 down to 115   |                                       |  |
| Power on indicator  |                                       |  |
| Yes   |                                       |  |
| Yes   |                                       |  |
| Number of shelf positions   |                                       |  |
| 3   |                                       |  |
| -   |                                       |  |
| Variable temperature control  |                                       |  |
| Yes   |                                       |  |
| Yes   |                                       |  |
| Removable fat tray  |                                       |  |
| Yes   |                                       |  |
| Yes   |                                       |  |
| Ergonomically designed handles  |                                       |  |
| Yes   |                                       |  |
| Yes   |                                       |  |
| Supplied with wall mounting brackets  |                                       |  |
| Yes   |                                       |  |
| No  |                                       |  |
| Power rating (kW)   |                                       |  |
| 2.8   |                                       |  |
| 2.8   |                                       |  |
| Voltage supply  |                                       |  |
| 220/240   |                                       |  |
| 220/240   |                                       |  |
| UK 3 pin plug   |                                       |  |
| Yes   |                                       |  |
| Yes   |                                       |  |
| Fitted cable length (M)   |                                       |  |
| 0.7   |                                       |  |
| 0.7   |                                       |  |

| <div><div></div><div></div><div></div><div></div><div></div><div></div><div></div><div></div><div></div></div> |                     |                    |                  |                    |                     |                    |                  |                    |                        |
|--|---------------------|--------------------|------------------|--------------------|---------------------|--------------------|------------------|--------------------|------------------------|
| Toasters   | Burco 4 Slot Chrome | Burco 4 Slot Black | Burco 4 Slot Red | Burco 4 Slot Cream | Burco 6 Slot Chrome | Burco 6 Slot Black | Burco 6 Slot Red | Burco 6 Slot Cream | Burco Conveyor Toaster |
| Model Number   | TSSL14CHR           | TSSL14BLK          | TSSL14RED        | TSSL14CRM          | TSSL16CHR           | TSSL16BLK          | TSSL16RED        | TSSL16CRM          | TSCNV01                |
| SKU code   | 444441581           | 444440980          | 444440606        | 444440607          | 444441582           | 444440981          | 444440608        | 444440609          | 444448554              |
| Barcode  | 5052263015814       | 5052263009806      | 5052263006065    | 5052263006072      | 5052263015821       | 5052263009813      | 5052263006089    | 5052263006096      | 5011832024572          |
| Product dimensions (mm) (wxdxh)  | 380x270x220         | 380x270x220        | 380x270x220      | 380x270x220        | 480x270x220         | 480x270x220        | 480x270x220      | 480x270x220        | 365x575x420            |
| Packed dimensions (mm) (wxdxh)   | 465x340x310         | 465x340x310        | 465x340x310      | 465x340x310        | 565x340x310         | 565x340x310        | 565x340x310      | 565x340x310        | 450x540x490            |
| Product weight (kg)  | 5                   | 5                  | 5                | 5                  | 6                   | 6                  | 6                | 6                  | 17.2                   |
| Packed weight (kg)   | 6                   | 6                  | 6                | 6                  | 8                   | 8                  | 8                | 8                  | 19.4                   |
| Slices of toast per hour (std white sliced bread)  | Up to 120           | Up to 120          | Up to 120        | Up to 120          | Up to 180           | Up to 180          | Up to 180        | Up to 180          | Up to 400              |
| Slot thickness (mm)  | 25                  | 25                 | 25               | 25                 | 25                  | 25                 | 25               | 25                 | Up to 20               |
| Variable timer option  | 0-5 mins            | 0-5 mins           | 0-5 mins         | 0-5 mins           | 0-5 mins            | 0-5 mins           | 0-5 mins         | 0-5 mins           | 45s to 1m 25s          |
| Removable crumb tray   | Yes                 | Yes                | Yes              | Yes                | Yes                 | Yes                | Yes              | Yes                | Yes                    |
| Variable slot selector   | Yes (2 or 4)        | Yes (2 or 4)       | Yes (2 or 4)     | Yes (2 or 4)       | Yes (3 or 6)        | Yes (3 or 6)       | Yes (3 or 6)     | Yes (3 or 6)       | -                      |
| Non slip feet for safety   | Yes                 | Yes                | Yes              | Yes                | Yes                 | Yes                | Yes              | Yes                | Yes                    |
| Power rating (kW)  | 2.4                 | 2.4                | 2.4              | 2.4                | 3.0                 | 3.0                | 3.0              | 3.0                | 2.6                    |
| Voltage supply (V)   | 220/240             | 220/240            | 220/240          | 220/240            | 220/240             | 220/240            | 220/240          | 220/240            | 220/240                |
| UK 3 pin plug  | Yes                 | Yes                | Yes              | Yes                | Yes                 | Yes                | Yes              | Yes                | Yes                    |
| Fitted cable length (M)  | 0.7                 | 0.7                | 0.7              | 0.7                | 0.7                 | 0.7                | 0.7              | 0.7                | 0.7                    |





## Ovens & Microwaves

| Model Number                        | Microwave Oven CTMW01 | Commercial Baby Belling BBEL01SS | Countertop Convection Oven CTC002 | Large Convection Oven CTC001                  |
|-------------------------------------|-----------------------|----------------------------------|-----------------------------------|---|
| SKU code                            | 444441097             | 444440915                        | 444441151                         | 444440542                                     |
| Barcode                             | 5052263010970         | 5052263009158                    | 5052263011519                     | 5052263005426                                 |
| Product dimensions (mm) (wxdxh)     | 520x435x312           | 482x430x409                      | 615x615x375                       | 800x600x580                                   |
| Packed dimensions (mm) (wxdxh)      | 586x486x378           | 500x450x560                      | 660x710x390                       | 895x750x705                                   |
| Product weight (kg)                 | 18                    | 23                               | 24                                | 71  |
| Packed weight (kg)                  | 20                    | 24                               | 26                                | 85  |
| Oven type                           | Microwave             | Standard                         | Fan assisted                      | Fan assisted                                  |
| Oven capacity (gross) (L)           | 25                    | 29                               | 59                                | 108   |
| Oven capacity (net) (L)             | 24                    | 27                               | 50                                | 95  |
| Oven cavity dimensions (mm) (wxdxh) | 335x364x212           | 405x295x240                      | 435x370x297                       | 545x430x395                                   |
| Oven temperature range              | -                     | 70 - 245°C                       | 0 - 250°C                         | 50 - 300°C                                    |
| Oven output power (W)               | 1000                  | 1300                             | 2500                              | 3000  |
| Number of shelves/shelf positions   | -                     | 1/3                              | 2/4                               | 4/7   |
| Useable shelf size (mm) (wxd)       | -                     | 380x295                          | 460x315                           | 529x408                                       |
| Internal light (W)                  | Yes (20)              | -                                | Yes (25)                          | Yes (15)                                      |
| Bulb type                           | SES                   | -                                | SES                               | SES   |
| Gastronorm compatible               | Yes (1/2)             | No                               | Yes (2/3)                         | Yes (1/1)                                     |
| Variable power levels               | Yes                   | Yes                              | No                                | Yes   |
| Timer                               | Yes (99min/9secs)     | No                               | Yes (0-120min)                    | Yes (0-60min)<br>(0-180min Cook & Hold Timer) |
| Control type                        | Digital               | Manual                           | Manual                            | Manual  |
| Programmable memory                 | Yes                   | No                               | No                                | No  |
| Power on indicator                  | Yes                   | Yes                              | Yes                               | Yes   |
| Non slip feet for safety            | Yes                   | Yes                              | Yes                               | Yes   |
| Power rating (kW)                   | 1.5                   | 2.5                              | 2.5                               | 3.1   |
| Voltage supply (V)                  | 220/240               | 220/240                          | 220/240                           | 220/240                                       |
| UK 3 pin plug                       | Yes                   | Yes                              | Yes                               | Yes   |
| Fitted cable length (M)             | 1                     | 1.8                              | 1.7                               | 0.7   |



## Accessories

| Model Number                    | Stand For Baby Belling BBEL420STAND | Splashback/Plateshelf for Titan SPLASHBACK | Wall Bracket for Salamander Grill WALL BRACKET | Stand For Large Convection Oven CTC001STD |
|---------------------------------|-------------------------------------|--|--|---|
| SKU code                        | 444440337                           | 444441812                                  | 444441811                                      | 444441579                                 |
| Barcode                         | 5052263003378                       | 5052263018129                              | 5052263018112                                  | 5052263015791                             |
| Product dimensions (mm) (wxdxh) | 482x419x532                         | 895x360x530                                | 800x400x200                                    | 800x600x700                               |
| Packed dimensions (mm) (wxdxh)  | 565x460x570                         | 1010x500x90                                | 810x410x210                                    | 810x610x710                               |
| Product weight (kg)             | 5                                   | 8.3  | 6.2  | 16.5                                      |
| Packed weight (kg)              | 5.3                                 | 9  | 7  | 17  |
| Colour                          | Black                               | Stainless steel                            | Stainless steel                                | Stainless steel                           |
| Material                        | Steel                               | Stainless steel                            | Stainless steel                                | Stainless steel                           |

Other **Catering Equipment**  
available from Lec & Burco

Cooking Equipment

Beverages Equipment

Display Refrigeration

Catering Refrigeration



**Lec** **BURCO**  
COMMERCIAL COMMERCIAL

visit [www.burco.co.uk](http://www.burco.co.uk) for more information



**Sales Enquiries:**

**email:** [sales@gdpa.co.uk](mailto:sales@gdpa.co.uk)

**tel:** 0844 815 3742

**fax:** 0844 815 3748

**Marketing Enquiries:**

**email:** [marketing@gdpa.co.uk](mailto:marketing@gdpa.co.uk)

**tel:** 0844 248 4274

**Spares and After Sales Service:**

**email:** [info@gdha.com](mailto:info@gdha.com)

**tel:** 0844 815 3755

**fax:** 0844 815 3748

**For all International**

**(Non-UK) Enquiries:**

**email:** [sales@gdpa.co.uk](mailto:sales@gdpa.co.uk)

**tel:** +44 151 493 3281

**fax:** +44 151 432 7082

**Address:**

Glen Dimplex Professional Appliances  
Stoney Lane, Prescot  
Merseyside L35 2XW

For any other information, please visit:

**[www.burco.co.uk](http://www.burco.co.uk)**

**[www.lec-commercial.co.uk](http://www.lec-commercial.co.uk)**



Glen Dimplex Professional Appliances is part of the Glen Dimplex Group

Glen Dimplex Professional Appliances operates the policy of continual improvement and development. Therefore we reserve the right to change the specification of any product without prior notice. All dimensions in the publication are approximate. Information correct at time of going to print. Please note that ongoing product improvement may result in minor changes in product technical specification. Where possible this will be communicated prior to supply. Please contact customer services for further information. E&OE.