



The Range Cooker Collection 2010

belling[®]
think of everything

Contents

Glossary	4-5
Belling Classic Collection	
Belling Classic 90cm	8-9
Belling Classic 100cm	10-11
Belling Classic 110cm	12-13
Belling Country Classic 100cm	14-15
Belling Contemporary Collection	
Belling DB4 90cm	18-19
Belling DB4 Professional 90cm	20-21
Belling Gourmet 90cm	22-23
Range Cooker Accessories	
Splashbacks 90/100/110cm	24
Chimney hoods 90/100/110cm	24
Customer Care	
Customer care	25
Range Cooker Specifications	
Range cooker specifications summary	26-27



Introduction

Choosing the right range cooker is a big decision. After all, it will provide the centrepiece to your kitchen and an untold number of meals. That's why we put over 95 years of knowledge and experience into every Belling range cooker.

We're really proud of our latest range cooker collection – all products are built to the highest possible standards, are available in a wide range of styles and specifications and have an environmentally friendly energy rating. So whatever your taste, there's a model here for you.

Glossary

All our Belling range cookers are built to the highest standards and have features and functions that we're really proud of. Take a closer look below.

Features and functions

Grill

A separate grill provides added flexibility when cooking and gives the perfect authentic finish to any dish.

Fan oven

For even, multi-level cooking. Suitable when cooking on several shelves at once as heat is produced evenly throughout the oven.

Conventional oven

Ideally suited for baking and roasting by combining heat from the top and base elements.

Easy clean enamel

Allows you to easily wipe away spills.

76 litre capacity

A tall, fanned second oven with a huge 76 litre capacity is a useful feature of some of our 90cm models. Essential for when you're entertaining the whole family.

Slow cook function

This feature is ideal for making a hearty casserole or simply for warming crockery before serving your meal.

Defrost function

Providing a safe way to speed up the defrosting process. Perfect for thawing delicate foods, gently.

Oven light

Allows you to see how your dish is cooking without having to open the door.

Warming zone

A low-heat setting for keeping food at just the right temperature if you're not going to eat it straight away.

Wok burner

Powerful, controllable and perfect for cooking up a stir-fry.

3-button programmer

User-friendly and simple to operate, the 3-button programmer gives you added control.

Fuel types:

Dual fuel

Offering the flexibility of a gas hob and an electric oven, this fuel option allows you to benefit from the controllability of a gas hob and the temperature distribution of an electric oven.

Electric

Combining an electric oven with an electric hob, great for even temperature distribution to achieve perfect results every time.

Gas

With a gas oven and hob, this fuel option is great for the more traditional cooks.

Key features:



Flame safety device

For added safety, this device is designed to detect if the flame goes out on your hob and will cut off the gas supply immediately.



Made in Britain

We're one of the only major kitchen appliance manufacturers still committed to manufacturing range cookers in this country - something we're incredibly proud of.



AA-energy rating

We take our responsibility to the environment very seriously, that's why all our appliances come with an environmentally friendly energy rating.



Belling Classic Collection

Our traditionally styled Classic Collection has a certain charm that is simply perfect for creating, or complementing, an authentic kitchen. Each range cooker has a classic look and houses a wealth of modern features inside.

Serious cooks will particularly benefit from the 2 ovens featured in the 90cm models; one of which has a very generous 76 litre capacity. This feature comes in handy when you're cooking for the whole family or entertaining.



Belling Classic

90DFT/E



Features

- Main fanned electric oven with light
- Tall fanned electric oven with light
- Separate variable dual zone electric grill
- Programmable main oven
- Easy clean enamel
- Dimensions 900-930h x 896w x 600d
- AA-energy rating

- Features a tall fanned second oven with a massive capacity of 76 usable litres

Dual fuel option

- 1 piece gas hob with 5 burners
- 3.5kW wok burner
- Cast iron pan supports

Electric option

- 5 ceramic zones including 1 dual zone



Features the Classic 90E black

Colours



Black

Cream

Silver

Dual Fuel
Electric

444440378
444440383

444440380
444440385

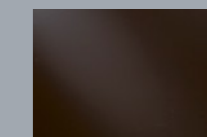
444440379
444440384

Hood



CHIM90
Black

Splashback



SBK90
Black

Belling Classic

100DFT/E/GT



Features

- Main fanned electric oven with light
- Conventional electric oven with light
- Separate variable dual zone electric grill
- Storage compartment
- Programmable main oven*
- Easy clean enamel
- Dimensions 900-930h x 996w x 600d
- AA-energy rating

Dual fuel option

- 1 piece gas hob with 7 burners
- 3.5kW wok burner
- Cast iron pan supports

Electric option

- Ceramic hob with 6 zones including 1 dual zone and 1 warming zone

Gas option

- 2 main gas ovens with light
- Separate variable gas grill
- 1 piece gas hob with 7 burners
- 3.5kW wok burner
- Cast iron pan supports



Features the Classic 100GT silver

Colours



Black

Silver

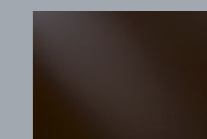
Dual Fuel	444440388	444440389
Electric	444440390	444440391
Gas	444440392	444440393

Hood



CHIM101
Black

Splashback



SBK100
Black

Belling Classic

110DFT/E/GT



Features

- Main fanned electric oven with light
- Conventional electric oven with light
- Separate variable dual zone electric grill
- Storage compartment
- Programmable main oven*
- Easy clean enamel
- Dimensions 900-930h x 1096w x 600d
- AA-energy rating

Dual fuel option

- 1 piece gas hob with 7 burners
- 3.5kW wok burner
- Cast iron pan supports

Electric option

- Ceramic hob with 7 zones including 1 dual zone and 1 warming zone

Gas option

- 2 main gas ovens with light
- Separate variable gas grill
- 1 piece gas hob with 7 burners
- 3.5kW wok burner
- Cast iron pan supports



Features the Classic 110DF cream

Colours



Black

Cream

Silver

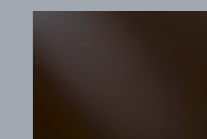
Dual Fuel	444440394	444440396	444440395
Electric	444440397	444440399	444440398
Gas	444440400	444440402	444440401

Hood



CHIM110
Black

Splashback



SBK110
Black

Belling Country Classic

100DFT/E/GT



Features

- Main fanned electric oven
- Conventional electric oven
- Separate variable electric grill
- Storage compartment
- Programmable main oven*
- Easy clean enamel
- Dimensions 900-930h x 996w x 600d
- AA-energy rating

Dual fuel option

- Gas hob with 8 burners
- Cast iron pan supports

Electric option

- Ceramic hob with 6 zones including 1 dual zone and 1 warming zone

Gas option

- 2 main gas ovens
- Separate variable gas grill
- Gas hob with 8 burners
- Cast iron pan supports



Features Country Classic 100DFT anthracite

Colours



Anthracite

Dual Fuel	444449440
Electric	444449445
Gas	444449442



Silver

Dual Fuel	444449441
Electric	444449444
Gas	444449443



Belling Contemporary Collection

The modern cook needs a range cooker that's as pleasing to the eye as it is to use. That's why we created our stunning Contemporary Collection.

Each model has up to the minute styling, neat and crisp lines and a designer edge throughout – right down to the control knobs. Form follows function and the Contemporary Collection's user-friendly features make it the perfect choice for those who just love to cook (and show off).

Belling DB4

90DFT/E



Features

- Main fanned electric oven with light
- Tall fanned electric oven with light
- Separate variable electric grill
- Programmable main oven
- Easy clean enamel
- Dimensions 900-930h x 896w x 600d
- AA-energy rating

- Features a tall fanned second oven with a massive capacity of 76 usable litres

Dual fuel option

- 1 piece gas hob with 5 burners
- 3.5kW wok burner
- Cast iron pan supports

Electric option

- 5 ceramic zones including 1 dual zone



Features DB490E black

Colours



Black

Dual Fuel
Electric444440180
444449418

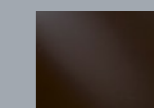
Stainless steel

444440181
444449417

Hoods

CHIM90
Black / Stainless steel

Splashback

SBK90/SBK90R
Black / Stainless steel*

*Stainless steel option is available with or without rail

Belling DB4 Professional

90DFT/E



Features

- Main fanned electric oven with light
- Tall fanned electric oven with light
- Separate variable electric grill
- Programmable main oven
- Easy clean enamel
- Dimensions 900-930h x 896w x 600d
- AA-energy rating

Dual fuel option

- 1 piece gas hob with 5 burners
- 3.5kW wok burner
- Cast iron pan supports

Electric option

- 5 ceramic zones including 1 dual zone

- Features a tall fanned second oven with a massive capacity of 76 usable litres



Features DB4 Professional 90E stainless steel

Colours



Stainless steel

Dual Fuel	444440535
Electric	444440534

Hood

CHIM90
Stainless steel

Splashback

SBK90/SBK90R
90cm splashback with
or without rail*

*Utensils not included

Belling Gourmet

90DFT



Features

- Multifunction electric oven
- Electric variable dual circuit grill
- Programmable main oven
- 1 piece gas hob with 5 burners
- 3.5kW wok burner
- Cast iron pan supports
- Easy clean enamel
- Dimensions 900-930h x 896w x 595d
- A-energy rating



Features Gourmet 90DFT red

Colours



Black

Stainless
steel

White

Red

Dual Fuel

444449852

444449517

444449876

444449875

Hood

CHIM90
Stainless steel

Splashback

SBK90/SBK90R
Stainless steel

Splashbacks & Chimney Hoods



Stainless steel

Splashbacks

- The perfect compliment to your range cooker
- Makes a feature in any kitchen

Dimensions

- 90cm: 750h x 900w
- 100cm: 750h x 1000w
- 110cm: 750h x 1100w

Product codes

	SBK90	SBK100	SBK110
BK	444449526	444449529	444449532
ST	444449524	444449527	444449530
ST*	444449525	444449528	444449531

* With rail



Stainless Steel



Black

Chimney Hoods

- 3 speed fan
- 2 x 40w halogen lamps
- Noise level 48dba
- Washable grease filters
- Push button controls
- Max extraction 470m³/h
- Motor rating 230w
- Position of duct outlet: top
- Ducting kit diameter: 120mm
- Minimum height above hob: 650mm

Dimensions

- 90cm: 260h x 900w x 495d
- 100cm: 260h x 1000w x 495d
- 110cm: 260h x 1082w x 495d

Product codes

	CHIM90	CHIM101	CHIM110
BK	444447072	444449661	050410097
ST	050410095	444449660	050410096

Customer Care

Customer care

At Belling we believe that the customer should always come first, that's why we insist on having the very best team of experts on hand to answer your questions in our UK call centre. Our award winning team can be contacted 7 days a week, 363 days a year.

Please contact

0844 815 3746

Opening times

Monday to Friday 8am - 6pm
Saturday 8.30am - 2pm
Sunday 10am - 2pm



No.1 for customer care

Warranty

As part of the ongoing commitment to our customers, we offer a 1 year parts and labour warranty* across all of our products and have over 150 qualified engineers on hand to respond to your needs quickly.

Cooker care

When it comes to keeping your range cooker, hood or splashback in top condition, who better to trust than the people that made it? We offer a range of bespoke cleaning and maintenance products designed specifically for your Belling appliances.

Our range of cleaning products are available by calling the Belling Spares Department on 0844 815 3745 or by visiting www.bellingspareparts.co.uk

Belling Range Cooker Specifications
Range Cooker Specifications Summary



Summary table for Belling Range Cooker Specifications (Page 26). Columns include model names (e.g., Classic 90DFT, DB4 Professional 90DFT) and rows for Fuel, Hob, Gas hob/electric hob, Cavity 1, Gas grill, Electric grill, Cavity 2, and Electric oven. Includes an Energy rating row at the bottom.

Glen Dimplex Home Appliances operate a continual product improvement policy, therefore we reserve the right to change the specifications for any product without notice. All dimensions are approximate. This brochure should not replace the installation manual that gives more detailed information. All cooking appliances featured within the brochure are CE marked as complying with the relevant appliance directives, produced under surveillance to BS EN ISO9000 series. Appliances can become very hot and retain their heat for a long period of time after use. Children should be supervised at all times and should not be allowed to touch the hot surfaces or be in the vicinity when in use or until the appliance has cooled. All technical data is taken under laboratory conditions and may vary in use. Ratings are quoted at 230V (also suitable for 220V and 240V). The statutory rights of the consumer are not affected. Every reasonable care has been taken to ensure that descriptions in brochures are accurate. However, specifications may change without prior notice. Please contact customer services before ordering. All electrical appliances must be installed by a qualified electrician using suitable electrical connections.

Belling Range Cooker Specifications
Range Cooker Specifications Summary (continued)



Summary table for Belling Range Cooker Specifications (Page 27). Columns include model names (e.g., DB4 Professional 90DFT, DB4 Professional 90E) and rows for Cavity 2 continued, Cavity 3, Gas grill, Electric oven/grill, Cavity 4, Timer, Accessories, Removable parts (for cleaning), Installation, and Finishes & codes. Includes an Energy rating row at the bottom.

*LPG kits can be ordered from our spares department. Please call 0844 815 3745. LPG kits must be fitted by a qualified Gas Safe Engineer.



think of everything

BELLING
STONE LANE
PRESCOT
MERSEYSIDE
L35 2XW

BELLING CUSTOMER CARE: 0844 815 3746

TRADE SUPPORT LINE: 0844 248 4147

Open Monday - Friday 9:00am - 4:30pm

CUSTOMER SUPPORT LINE: 0844 248 4149

Open Monday - Friday 9:00am - 4:30pm

Belling is a member of Glen Dimplex Home Appliances.
The Belling logo is a registered trademark.

www.belling.co.uk



Designed by hôme.
www.home-ad.com