

Range Cooker Collection



Make a statement





Not so much a contents page, but a menu.
We make a statement on every page.

| | |
|--|-------|
| Contents | 2-3 |
| Heritage | 4-5 |
| Glossary | 6-7 |
| Introduction to Richmond | 8-9 |
| Richmond 900mm | 10-11 |
| Richmond 1000mm | 12-13 |
| Richmond 1100mm | 14-15 |
| Richmond Classic 900mm | 16-17 |
| Richmond Classic 1100mm | 18-19 |
| Richmond Flavours | 20-21 |
| Introduction to Sterling | 22-23 |
| Sterling 900mm | 24-25 |
| Sterling 1000mm | 26-27 |
| Sterling 1100mm | 28-29 |
| Sterling Flavours | 30-31 |
| Recipes | 32-33 |
| Hoods & splashbacks / customer care / warranty | 34-35 |
| Bakeware | 36-37 |
| Technical specifications | 38-39 |



Making a statement
SINCE
1920

A decorative flourish consisting of a horizontal line with a stylized, calligraphic flourish in the center, positioned below the year 1920.

A Brand Built Heritage

On February 14th 1920, Stoves & Co. was formed and it set out to completely change the face of cooking. And, for over the best part of a century, that's exactly what we've done!

Our dedication to building high quality, innovative and industry-leading products has inspired over 4 generations of home cooks and professional chefs, alike. And, although our products have changed over the years, our dedication, quality and desire to not just push boundaries but break through them, has remained as strong.

Today, Stoves is one of the UK's largest and best-loved cooking brands, providing stunning cookers and appliances to the nation from our Liverpool - based HQ and manufacturing plant.





GLOSSARY

All our range cookers are built to the highest standards. Whatever style, fuel preference or size you are looking for, you can be sure that we have one that makes a statement about you.

Features and functions:

Grill

A separate grill provides added flexibility when cooking and gives the perfect authentic finish to any dish.

Dual circuit variable grill

A grill that enables you to tailor the power to suit your requirements. You can use a low setting when you want to be gentle and a high setting when you don't.

Fan oven

For even, multi-level cooking. Suitable when cooking on several shelves at once as heat is produced evenly throughout the oven.

Tall fan oven

For even, multi-level cooking with a huge 91 litre capacity oven. Suitable when cooking on several shelves at once as heat is produced evenly throughout the oven.

Conventional oven

Ideally suited for baking and roasting by combining heat from the top and base elements.

Multifunction oven

9 functions giving ultimate flexibility including fan, intensive bake, conventional, browning element and fanned grilling.

Fanned defrost

The oven fan assists defrosting by circulating air around the food, ideal for delicate frozen foods such as cream gateaux or cheesecakes.

Pristine® enamel

Our range cookers feature this unique enamel finish. Pristine® enamel is three times easier to clean than regular enamel.

Telescopic shelves

The smooth action of these slide out shelves makes accessing your food easier and safer.

Oven light

Allows you to see how your dish is cooking without having to open the door.

Warming zone

A low-heat setting for keeping food at just the right temperature if you're not going to eat it straight away.

Wok burner

An extra large burner offering the benefit of intensive heat, perfect for high speed cooking and stir fries.

3-button programmer

User-friendly and simple to operate, the 3-button programmer gives you added control.



Fuel types:

Dual fuel

Offering the flexibility of a gas hob and an electric oven, this fuel option allows you to benefit from the controllability of a gas hob and the temperature distribution of an electric oven.

Electric

Combining an electric oven with an electric hob, great for even temperature distribution to achieve perfect results every time.

Gas

With a gas oven and hob, this fuel option is great for the more traditional cooks.

Induction glossary



Smarter



Faster



Safer



Greener

Key features:



Flame safety device

For added safety, this device is designed to detect if the flame goes out on your hob and will cut off the gas supply immediately.



AA-energy rating

We take our responsibility to the environment very seriously, that's why all our appliances come with an environmentally friendly energy rating.



Made in Britain

We're one of the only major kitchen appliance manufacturers still committed to manufacturing range cookers in this country - something we're incredibly proud of.

Smarter, faster, safer, greener technology
induction technology works by heating the pan rather than the hob,
offering a smarter, faster, safer and greener way to cook.





Making a statement
SINCE
1920



Richmond

Designed with classic styling and enough features to keep any serious cook smiling, this collection really does have it all. Available in 900mm, 1000mm and 1100mm sizes, you'll love the extra-wide hobs with up to seven burners and the extra cooking space with up to four ovens.

Available in either black or champagne and, in our Flavours collection, jalapeño, aubergine, papaya, sushi and white – there's a whole-host to choose from. But, what's more, you can also get these cookers in our new Richmond Classic collection. In burgundy and racing green, these two stunning range cookers add a touch of sophistication to your kitchen.

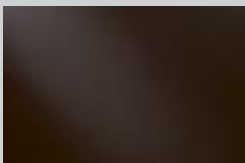
COLOURS



Black



Champagne

SBK90
900mm wide splashback

Finish ■

900DCP
900mm wide designer chimney hood

Finish ■

Features

- Main multifunction electric oven - 9 functions giving ultimate flexibility including fan, intensive bake, conventional, browning element & fanned grilling
- Tall fanned electric oven – with a 91 litre capacity
- Separate dual circuit electric grill & conventional electric oven
- Telescopic shelves
- Internal oven lights
- Programmable main oven
- Pristine® enamel
- Dimensions 900-930h x 896w x 600d
- AA energy rating

Dual fuel option

- 1 piece gas hob with 5 burners including 3.5kW wok burner
- Cast pan supports & removable griddle

900DFT: Black 444440195 | Champagne 444440196

Electric option

- 5 zone ceramic hob with 2 Induction Zones, 2 ceramic zones & 1 warming zone

900E: Black 444447093 | Champagne 444447094

“Tall fanned electric oven –
with 91 litre capacity”





Richmond

900DFT/E



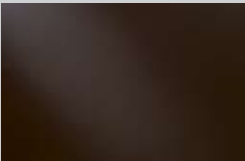
COLOURS



Black



Champagne

SBK100
1000mm wide splashback

Finish ■

1000DCP
1000mm wide designer chimney hood

Finish ■

Features

- Main multifunction electric oven - 9 functions giving ultimate flexibility including fan, intensive bake, conventional, browning element & fanned grilling
- Fanned electric oven
- Separate dual circuit electric grill & conventional electric oven
- Slow cook oven
- Telescopic shelves
- Internal oven lights
- Programmable main oven*
- Pristine® enamel
- Dimensions 900-930h x 996w x 600d
- AA energy rating

Dual fuel option

- 1 piece gas hob with 7 burners including 3.5kW wok burner
- Cast pan supports & removable griddle

1000DFT: Black 444440199 | Champagne 444440200

Gas option

- 1 piece gas hob with 7 burners including 3.5kW wok burner
- 2 main gas ovens
- Slow cook oven
- Cast pan supports & removable griddle
- Separate dual circuit electric grill & conventional gas oven

1000GT: Black 444440197 | Champagne 444440198

“Ultimate cooking flexibility”

*Programmer on the gas option is cook to off only





Richmond

1000DFT/GT



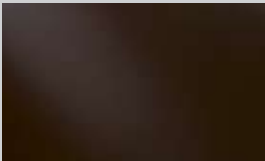
COLOURS



Black



Champagne

SBK110
1100mm wide splashback

Finish ■

1100DCP
1100mm wide designer chimney hood

Finish ■

Features

- Main multifunction electric oven - 9 functions giving ultimate flexibility including fan, intensive bake, conventional, browning element & fanned grilling
- Fanned electric oven
- Separate dual circuit electric grill & conventional electric oven
- Slow cook oven
- Telescopic shelves
- Internal oven lights
- Programmable main oven*
- Pristine® enamel
- Dimensions 900-930h x 1096w x 600d
- AA energy rating

Dual fuel option

- 1 piece gas hob with 7 burners including 3.5kW wok burner
- Cast pan supports & removable griddle

1100DF: Black 444440203 | Champagne 444440204

Electric option

- 7 zone ceramic hob with 4 induction zones, 2 ceramic zones & 1 warming zone

1100E: Black 444448020 | Champagne 444448021

Gas option

- 1 piece gas hob with 7 burners including 3.5kW wok burner
- 2 main gas ovens
- Slow cook oven
- Cast pan supports & removable griddle
- Separate dual circuit electric grill & conventional gas oven

1100GT: Black 444440201 | Champagne 444440202

*Programmer on the gas option is cook to off only





Richmond

1100DFT/E/GT



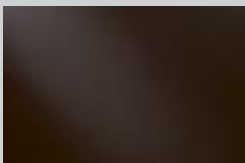
COLOURS



Racing green



Burgundy

SBK90
900mm wide splashback

Finish ■

900DCP
900mm wide designer chimney hood

Finish ■

Features

- Main multifunction electric oven - 9 functions giving ultimate flexibility including fan, intensive bake, conventional, browning element & fanned grilling
- Tall fanned electric oven – with a 91 litre capacity
- Separate dual circuit electric grill & conventional electric oven
- Telescopic shelves
- Internal oven lights
- Programmable main oven
- Pristine® enamel
- Dimensions 900-930h x 896w x 600d
- AA energy rating

Dual fuel option

- 1 piece gas hob with 5 burners including 3.5kW wok burner
- Cast pan supports & removable griddle

900DFT: Burgundy 444440407 | Racing green 444440406

Electric option

- 5 zone ceramic hob with 2 Induction zones, 2 ceramic zones & 1 warming zone

900E: Burgundy 444440409 | Racing green 444440408

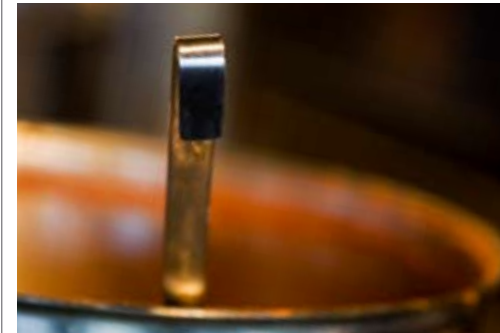
“Tall fanned electric oven –
with 91 litre capacity”





Classic Richmond

900DFT/E



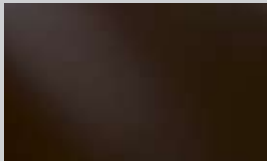
COLOURS



Racing green



Burgundy

SBK110
1100mm wide splashback

Finish ■

1100DCP
1100mm wide designer chimney hood

Finish ■

Features

- Main multifunction electric oven - 9 functions giving ultimate flexibility including fan, intensive bake, conventional, browning element & fanned grilling
- Fanned electric oven
- Separate dual circuit electric grill & conventional electric oven
- Slow cook oven
- Telescopic shelves
- Internal oven lights
- Programmable main oven
- Pristine® enamel
- Dimensions 900-930h x 1096w x 600d
- AA energy rating

Dual fuel option

- 1 piece gas hob with 7 burners including 3.5kW wok burner
- Cast pan supports & removable griddle

1100DFT: Burgundy 444440411 | Racing green 444440410

Electric option

- 7 zone ceramic hob with 4 induction zones, 2 ceramic zones & 1 warming zone

1100E: Burgundy 444440413 | Racing green 444440412

“Ultimate cooking flexibility”





Classic Richmond

1100DFT/E



COLOURS



Aubergine



White



Sushi



Papaya

Hoods and splashbacks as page 18 and 19

Flavours

...a collection of coloured range cookers which will add spice to any dish not to mention any kitchen. With an eclectic array of colours to choose from - just add to taste!

Features

- Main multifunction electric oven - 9 functions giving ultimate flexibility including fan, intensive bake, conventional, browning element & fanned grilling
- Fanned electric oven
- Separate dual circuit electric grill & conventional electric oven
- Slow cook oven
- Telescopic shelves
- Internal oven lights
- Programmable main oven
- Pristine® enamel
- Dimensions 900-930h x 1096w x 600d
- AA energy rating

Dual fuel option

- 1 piece gas hob with 7 burners including 3.5kW wok burner
- Cast pan supports & removable griddle

1100DFT: Jalapeño 444440205 | Aubergine 444440208 | Papaya 444440207 | Sushi 444440206 | White 444440209





Richmond

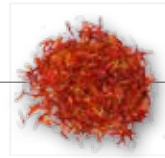
1100DFT



Jalapeño







Making a statement
SINCE
1920



Sterling

Stylish and contemporary, a Stoves Sterling is the centrepiece of any kitchen. Available in the stainless steel, black and the Flavours colours (jalapeño and white) that you know and love in a variety of sizes, and come with a whole host of features. Telescopic shelves, wok burners and a choice of fuel options to name but a few!

So, with precision engineering, high quality materials, great looks and packed full of amazing features, you can be inspired and explore new cooking worlds with a stunning Stoves Sterling.

COLOURS



Black



Stainless steel

SBK90
900mm wide splashback



Finishes  

900DTC
900mm wide designer chimney hood



Finish 

Features

- Main multifunction electric oven - 9 functions giving ultimate flexibility including fan, intensive bake, conventional, browning element & fanned grilling
- Tall fanned electric oven – with a 91 litre capacity
- Separate dual circuit electric grill
- Telescopic shelves
- Internal oven lights
- Programmable main oven
- Pristine® enamel
- Dimensions 900-930h x 896w x 600d
- AA energy rating

Dual fuel option

- 1 piece gas hob with 5 burners including 3.5kW wok burner
- Cast pan supports & removable griddle

900DFT: Black 444440464 | Stainless steel 444440465

Electric option

- 5 zone ceramic hob including 1 dual zone

900E: Black 444440466 | Stainless steel 444440467

“Tall fanned electric oven –
with 91 litre capacity”





Sterling

900DFT/E



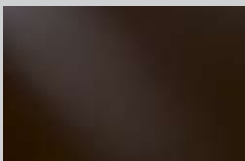
COLOURS



Black



Stainless steel

SBK100
1000mm wide splashback

Finishes

1000DCP
1000mm wide designer chimney hood

Finishes

Features

- Main multifunction electric oven - 9 functions giving ultimate flexibility including fan, intensive bake, conventional, browning element & fanned grilling
- Fanned electric oven
- Separate dual circuit electric grill
- Slow cook oven
- Telescopic shelves
- Internal oven lights
- Programmable main oven*
- Pristine® enamel
- Dimensions 900-930h x 996w x 600d
- AA energy rating

Dual fuel option

- 1 piece gas hob with 7 burners including 3.5kW wok burner
- Cast pan supports & removable griddle

1000DFT: Black 4444440790 | Stainless steel 4444440791

Gas option

- 1 piece gas hob with 7 burners including 3.5kW wok burner
- 2 main gas ovens
- Slow cook oven
- Cast pan supports & removable griddle
- Separate variable gas grill

1000GT: Black 444440792 | Stainless steel 444440793

“AA energy rating”

*Programmer on the gas option is cook to off only





Sterling

1000DFT/GT



COLOURS



Black



Stainless steel

SBK110
1100mm wide splashbackFinishes  1100Pro
1100mm wide designer chimney hoodFinishes  

Features

- Main multifunction electric oven - 9 functions giving ultimate flexibility including fan, intensive bake, conventional, browning element & fanned grilling
- Fanned electric oven
- Separate dual circuit electric grill
- Slow cook oven
- Telescopic shelves
- Internal oven lights
- Programmable main oven*
- Pristine® enamel
- Dimensions 900-930h x 1096w x 600d
- AA energy rating

Dual fuel option

- 1 piece gas hob with 7 burners including 3.5kW wok burner
- Cast pan supports & removable griddle

1100DF: Black 444440794 | Stainless steel 444440795

Electric option

- 7 zone ceramic hob with 4 induction zones, 2 ceramic zones & 1 warming zone

1100E: Black 444440800 | Stainless steel 444440801

Gas option

- 1 piece gas hob with 7 burners including 3.5kW wok burner
- 2 main gas ovens
- Slow cook oven
- Cast pan supports & removable griddle
- Separate variable gas grill

1100GT: Black 444440799 | Stainless steel 444440798

*Programmer on the gas option is cook to off only





Sterling

1100DFT/E/GT



COLOURS



Jalapeño



White

SBK110
1100mm wide splashback

Finish

110DCP
1100mm wide designer chimney hood

Finish

Flavours

...a collection of coloured range cookers which will add spice to any dish not to mention any kitchen. With an eclectic array of colours to choose from - just add to taste!

Features

- Main multifunction electric oven - 9 functions giving ultimate flexibility including fan, intensive bake, conventional, browning element & fanned grilling
- Fanned electric oven
- Separate dual circuit electric grill
- Slow cook oven
- Telescopic shelves
- Internal oven lights
- Programmable main oven
- Pristine® enamel
- Dimensions 900-930h x 1096w x 600d
- AA energy rating

Dual Fuel option

- 1 piece gas hob with 7 burners including 3.5kW wok burner
- Cast pan supports & removable griddle

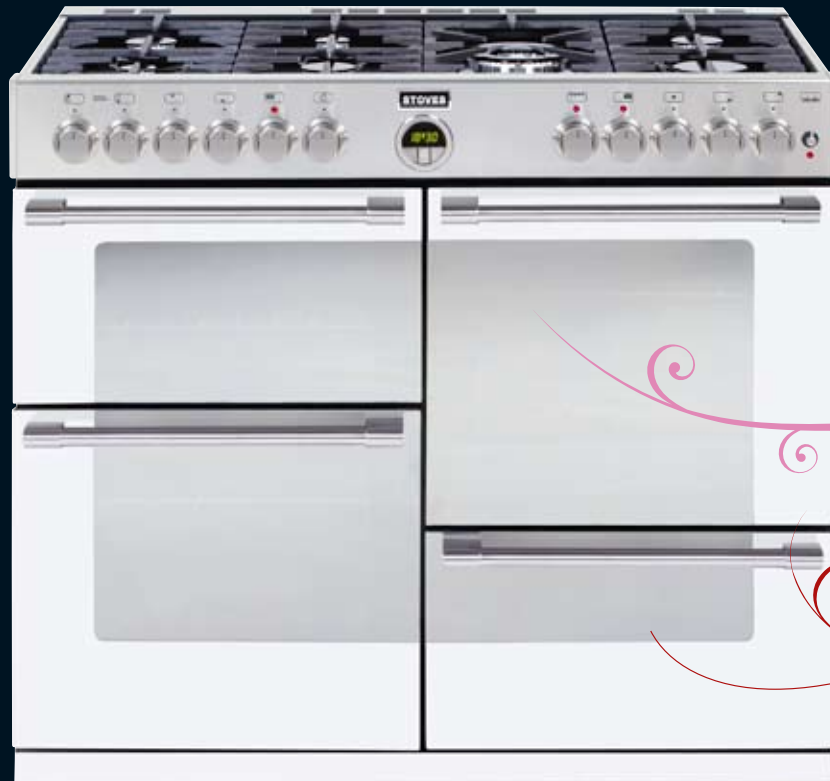
1100DFT: Jalapeño 444440796 | White 444440797

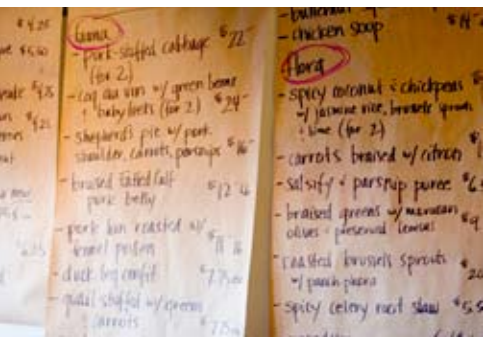




Sterling

1100DFT





OLLIE

Favourite recipes

Prawn & mango curry



SERVES 2

TIME 30 MINS

683 CALORIES PER PORTION

50G FAT OF WHICH 32G IS SATURATED

Light olive oil 2 tbsp

Spring onions 3, trimmed and sliced diagonally

Mange tout 110g (4oz), trimmed

Mango 1, peeled, flesh cut from each side of the stone and thinly sliced lengthways

Medium curry paste 2 tbsp

Coconut cream 200ml carton

Cooked fantail king prawns with tails on 200g (7oz), black vein removed from back of each prawn

Chopped coriander 4 tbsp, plus sprigs for garnish.

1 Heat olive oil in a large wok, add spring onions and mange tout and stir-fry until both are softened, yet still retain a slight crispness.

2 Add mango and curry paste and cook for 1–2 minutes. Pour coconut cream into wok, add prawns and heat through until piping hot, but not boiling.

3 Stir in coriander and serve garnished with coriander sprigs and accompanied with cooked basmati rice.

Strawberry tarts



MAKES 18

TIME 55–70 MINS

86 CALORIES PER TART

4G FAT OF WHICH 2.5G IS SATURATED

Wholemeal flour 75g (3oz)

Plain flour 75g (3oz)

Caster sugar 25g (1oz)

Unsalted butter 75g (3oz)

Egg 1, beaten

Apricot conserve 5 tbsp, heated and sieved

Large strawberries 18, hulled

Natural Greek yogurt 4 tbsp

Small mint leaves to decorate

Icing sugar for sifting

1 Preheat oven to 180°C/350°F/Gas 4. Put flours into a bowl. Mix in sugar and then rub in butter until mixture resembles breadcrumbs. Add egg and 1 tsp water, and then mix to form a soft, but not sticky, dough.

2 Knead on a lightly floured surface until smooth. Roll out to about 3mm (1/8in) thick. Using a 9cm (3 1/2in) cutter, cut out rounds and place in bun-tin trays. Re-knead and re-roll dough and cut out more rounds. Repeat until you have 18 cases.

3 Place a small paper cake case in each pastry case and put a small teaspoonful of rice into each one. Bake for 10 minutes, remove paper cases and rice and cook for another 3–5 minutes until lightly browned and cooked. Allow tarts to cool.

4 Brush shells with conserve and put extra in bottom. Cut each strawberry into 6 wedges and arrange in tarts. Spoon yogurt into the middle, decorate with mint leaves and sift icing sugar over tarts.



DCP hood

900mm, 1000mm, 1100mm wide designer hood

- 3 fan speeds
- Twin lights
- Illuminated push button controls
- Noise level 52dba
- Max extraction 650m3/h
- Motor rating 250w
- Ducting kit diameter 150/150mm
- Fuse size 3amp

Dimensions

- 900mm 100h x 900w x 500d
- 1000mm 100h x 100w x 500d
- 1100mm 100h x 110w x 500d

Black

900mm 444447995
1000mm 444445954
1100mm 444445956

Stainless steel

900mm 444447994
1000mm 444445953
1100mm 444445955



900DTC

900mm wide designer hood

- 3 fan speeds
- Twin halogen lights
- Touch control
- Noise level 52dba
- Max extraction 650m3/h
- Motor rating 250w
- Fuse size 3amp

Dimensions

- 900mm 100h x 900w x 500d

Stainless steel 444448484



1100Pro

1100mm wide designer hood

- 3 fan speeds
- 2 halogen lights
- Illuminated electronic controls
- Noise level 52amp
- Max extraction 650m3/h
- Motor rating 250w
- Fuse amp size 3 amp

Dimensions

- 1100mm 100h x 110w x 500d

Stainless steel 444445449



SBK splashbacks

900mm, 1000mm, 1100mm wide

- The perfect compliment to your range cooker
- Makes a feature in any kitchen

Dimensions

- 900mm: 750h x 900w
- 1000mm: 750h x 1000w
- 1100mm: 750h x 1100w

Black

900mm 444449526
1000mm 444449529
1100mm 444449532

Stainless steel

900mm 444449524
1000mm 444449527
1100mm 444449530

Stainless steel with rail

900mm 444449525
1000mm 444449528
1100mm 444449531



Stoves - proud to be British

Stoves is a major kitchen appliance company committed to manufacturing in the UK. We know exactly what the British cook expects from their appliances and tailor our products accordingly.

The fact that we employ over 1000 staff in the UK really makes a statement about our commitment to offering our customers the best possible services via:

A UK manufacturing site - we're proud to manufacture in Britain and employ hundreds of staff with the experience required to make exceptional products. Look out for the Union Jack flags throughout this brochure denoting which products are made in the UK. 

A UK customer care centre - we have over 100 friendly customer care assistants and 150 engineers based right here in the UK. Just call **0844 815 3740** and you'll get straight through to one of them. Lines are open Monday to Friday from 8am to 6pm, Saturday from 8.30am to 2pm and Sunday from 10am to 2pm.

A UK distribution centre - based just off the M6, our distribution centre is centrally located and we've invested millions of pounds to ensure our products arrive safely and on time.

We take customer care to another level

Our commitment to you goes way beyond a great range of products. We're with you every step of the way while making your purchase and beyond. If you have any questions whatsoever about Stoves, our products and stockists, or if you'd like assistance in choosing the Stoves range cooker that's right for you just call **0844 815 3740**, we're always here to help.

Our customer care has proven year after year to be first class making us winners of Domestic & General – the UK's leading appliance protection specialist Total Excellence & Quality Customer Care Award in 2005, 2006 & 2007.



Stoves warranty

As part of our ongoing commitment to the Stoves customer, in addition to the 1 year labour warranty, all range cookers come with an additional 5 year parts guarantee.





Brian Turner

We are delighted to have top chef Brian Turner as our brand ambassador. Brian's unrivalled pedigree as a classically trained chef and TV personality makes him ideal for Stoves. He's already been actively involved in product design and has made a number of public appearances and cooking demonstrations in support of our products.



New from Stoves - Brian Turner Bakeware

Square roast bake pan

Size (mm) 246w x 236h x 48d

Product Code: 5060030400305



Lasagne roast pan (med)

Size (mm) 268w x 376h x 47d

Product Code: 5060030400213



Oven tray

Size (mm) 292w x 432h x 18d

Product Code: 5060030400190



12 cup yorkshire pudding

Size (mm) 285w x 375h x 32d

Product Code: 5060030400275



Round cake pan

Size (mm) 200dia x 49d

Product Code: 5060030400329



Specifications for all Bakeware products

- 1mm thick (average bakeware is only 0.4mm thick)
- Extra heavy weight
- Reinforced non-stick
- Dishwasher safe
- 10 year limited warranty

To start cooking like the pros, order your Brian Turner Bakeware online today at www.stoves.co.uk



| | Richmond 900DFT | Richmond 900E | Richmond 1000DFT | Richmond 1000GT | Richmond 1100DFT | Richmond 1100E | Richmond 1100GT | Richmond Classic 900DFT | Richmond Classic 900E | Richmond Classic 1100DFT | Richmond Classic 1100E | Sterling 900DFT | Sterling 900E | Sterling 1000DFT | Sterling 1000GT | Sterling 1100DFT | Sterling 1100E | Sterling 1100GT | | |
|--|-----------------|---------------|------------------|-------------------|------------------|----------------|-------------------|-------------------------|-----------------------|--------------------------|------------------------|-----------------|---------------|------------------|-----------------|-------------------|-----------------|-----------------|-------------------|-----------|
| Cavity 3 | | | | | | | | | | | | | | | | | | | | |
| Position | Right-tall | Right-tall | Top-right | Top-right | Top-right | Top-right | Top-right | Right-tall | Right-tall | Top-right | Top-right | Right-tall | Right-tall | Top-right | Top-right | Top-right | Top-right | Top-right | Top-right | |
| Function | Fanned oven | Fanned oven | Fanned oven | Conventional oven | Fanned oven | Fanned oven | Conventional oven | Fanned oven | Fanned oven | Fanned oven | Fanned oven | Fanned oven | Fanned oven | Fanned oven | Fanned oven | Conventional oven | Fanned oven | Fanned oven | Conventional oven | |
| Gas oven | | | | | | | | | | | | | | | | | | | | |
| Conventional gas oven | - | - | - | Yes | - | - | Yes | - | - | - | - | - | - | - | - | Yes | - | - | Yes | |
| Electric oven | | | | | | | | | | | | | | | | | | | | |
| Fanned electric oven | Yes | Yes | Yes | - | Yes | Yes | - | Yes | Yes | Yes | Yes | Yes | Yes | Yes | Yes | - | Yes | Yes | - | |
| Defrost | Yes | Yes | Yes | - | Yes | Yes | - | Yes | Yes | Yes | Yes | Yes | Yes | Yes | Yes | - | Yes | Yes | - | |
| Energy rating | A | A | A | - | A | A | - | A | A | A | A | A | A | A | A | - | A | A | - | |
| Cavity features | | | | | | | | | | | | | | | | | | | | |
| Actual capacity (litres) | 91 | 91 | 62 | 62 | 69 | 69 | 69 | 91 | 91 | 69 | 69 | 91 | 91 | 62 | 62 | 69 | 69 | 69 | 69 | |
| Usable capacity (litres) | 76 | 76 | 52 | 42 | 59 | 59 | 48 | 76 | 76 | 59 | 59 | 76 | 76 | 52 | 42 | 59 | 59 | 59 | 48 | |
| Power (kW) | 2.5 | 2.5 | 2.0 | 2.5 | 2.0 | 2.0 | 2.0 | 2.5 | 2.5 | 2.0 | 2.0 | 2.5 | 2.5 | 2.0 | 2.5 | 2.0 | 2.0 | 2.0 | 2.0 | |
| No of shelves | 4 | 4 | 2 | 2 | 2 | 2 | 2 | 4 | 4 | 2 | 2 | 4 | 4 | 2 | 2 | 2 | 2 | 2 | 2 | |
| No of shelf positions | 25 | 25 | 5 | 5 | 5 | 5 | 5 | 25 | 25 | 5 | 5 | 25 | 25 | 5 | 5 | 5 | 5 | 5 | 5 | |
| Telescopic shelves | - | - | Yes | Yes | Yes | Yes | Yes | - | - | Yes | Yes | - | - | Yes | Yes | Yes | Yes | Yes | Yes | |
| No of oven lights | 1 x 40KW | 1 x 40KW | 1 x 40KW | 1 x 40KW | 1 x 40KW | 1 x 40KW | 1 x 40KW | 1 x 40KW | 1 x 40KW | 1 x 40KW | 1 x 40KW | 1 x 40KW | 1 x 40KW | 1 x 40KW | 1 x 40KW | 1 x 40KW | 1 x 40KW | 1 x 40KW | 1 x 40KW | |
| Door opening | Right hand | Right hand | Right hand | Right hand | Right hand | Right hand | Right hand | Right hand | Right hand | Right hand | Right hand | Right hand | Right hand | Right hand | Right hand | Right hand | Right hand | Right hand | Right hand | |
| Cavity 4 | | | | | | | | | | | | | | | | | | | | |
| Position | - | - | Bottom-right | Bottom-right | Bottom-right | Bottom-right | Bottom-right | - | - | Bottom-right | Bottom-right | - | - | Bottom-right | Bottom-right | Bottom-right | Bottom-right | Bottom-right | Bottom-right | |
| Function | - | - | Slow cook | Slow cook | Slow cook | Slow cook | Slow cook | - | - | Slow cook | Slow cook | - | - | Slow cook | Slow cook | Slow cook | Slow cook | Slow cook | Slow cook | |
| Fuel | - | - | Electric | Electric | Electric | Electric | Electric | - | - | Electric | Electric | - | - | Electric | Electric | Electric | Electric | Electric | Electric | |
| Cavity features | | | | | | | | | | | | | | | | | | | | |
| Actual capacity (litres) | - | - | 35 | 35 | 39 | 39 | 39 | - | - | 39 | 39 | - | - | 35 | 35 | 39 | 39 | 39 | 39 | |
| Power (kW) | - | - | 0.16 | 0.16 | 0.16 | 0.16 | 0.16 | - | - | 0.16 | 0.16 | - | - | 0.16 | 0.16 | 0.16 | 0.16 | 0.16 | 0.16 | |
| Door opening | - | - | Drop-down | Drop-down | Drop-down | Drop-down | Drop-down | - | - | Drop-down | Drop-down | - | - | Drop-down | Drop-down | Drop-down | Drop-down | Drop-down | Drop-down | |
| Timer | | | | | | | | | | | | | | | | | | | | |
| LED clock/programmer | Yes | Yes | Yes | Yes | Yes | Yes | Yes | Yes | Yes | Yes | Yes | Yes | Yes | Yes | Yes | Yes | Yes | Yes | Yes | |
| Accessories | | | | | | | | | | | | | | | | | | | | |
| Removable cast griddle plate | Yes | - | Yes | Yes | Yes | - | Yes | Yes | - | Yes | - | Yes | - | Yes | Yes | Yes | Yes | - | Yes | |
| Grillpan/handle/trivet | Yes | Yes | Yes | Yes | Yes | Yes | Yes | Yes | Yes | Yes | Yes | Yes | Yes | Yes | Yes | Yes | Yes | Yes | Yes | |
| Roasting tin | Yes | Yes | Yes | Yes | Yes | Yes | Yes | Yes | Yes | Yes | Yes | Yes | Yes | Yes | Yes | Yes | Yes | Yes | Yes | |
| Installation | | | | | | | | | | | | | | | | | | | | |
| Gas type | Nat Gas | - | Nat Gas | Nat Gas | Nat Gas | - | Nat Gas | Nat Gas | - | Nat Gas | - | Nat Gas | - | Nat Gas | Nat Gas | Nat Gas | Nat Gas | - | Nat Gas | |
| Gas inlet type | 1/2" BSP female | - | 1/2" BSP female | 1/2" BSP female | 1/2" BSP female | - | 1/2" BSP female | 1/2" BSP female | - | 1/2" BSP female | - | 1/2" BSP female | - | 1/2" BSP female | 1/2" BSP female | 1/2" BSP female | 1/2" BSP female | - | 1/2" BSP female | |
| Gas inlet position | Rear right | - | Rear right | Rear right | Rear right | - | Rear right | Rear right | - | Rear right | - | Rear right | - | Rear right | Rear right | Rear right | Rear right | - | Rear right | |
| Power supply | 230V | 230V | 230V | 230V | 230V | 230V | 230V | 230V | 230V | 230V | 230V | 230V | 230V | 230V | 230V | 230V | 230V | 230V | 230V | |
| Fuse size (A) | 32 | 45 | 32 | 13 | 32 | 45 | 13 | 32 | 45 | 32 | 45 | 32 | 45 | 32 | 45 | 32 | 45 | 32 | 45 | |
| Fitted 3 pin plug | - | - | - | Yes | - | - | Yes | - | - | - | - | - | - | - | - | Yes | - | - | Yes | |
| Weight (kg) | 88 | 88 | 106 | 109 | 115 | 105 | 116 | 88 | 88 | 115 | 105 | 88 | 88 | 106 | 109 | 115 | 105 | 105 | 116 | |
| Convertible LPG Kit available (separately) | Yes | - | Yes | - | Yes | - | - | Yes | - | Yes | - | Yes | - | Yes | - | Yes | - | - | - | |
| Finishes & Codes | | | | | | | | | | | | | | | | | | | | |
| Stainless steel | - | - | - | - | - | - | - | - | - | - | - | - | - | 444440465 | 444440467 | 444440791 | 444440793 | 444440795 | 444440801 | 444440798 |
| Black | 444440195 | 444447093 | 444440199 | 444440197 | 444440203 | 444448020 | 444440201 | - | - | - | - | - | - | 444440464 | 444440466 | 444440790 | 444440792 | 444440794 | 444440800 | 444440799 |
| Champagne | 444440195 | 444447094 | 444440200 | 444440198 | 444440204 | 444448021 | 444440202 | - | - | - | - | - | - | - | - | - | - | - | - | - |
| Burgundy | - | - | - | - | - | - | - | 444440407 | 444440409 | 444440411 | 444440413 | - | - | - | - | - | - | - | - | |
| Racing green | - | - | - | - | - | - | - | 444440406 | 444440408 | 444440410 | 444440412 | - | - | - | - | - | - | - | - | |
| Jalapeno (red) | - | - | - | - | 444440205 | - | - | - | - | - | - | - | - | - | - | - | 444440796 | - | - | |
| Aubergine (purple) | - | - | - | - | 444440208 | - | - | - | - | - | - | - | - | - | - | - | - | - | - | |
| Papaya (orange) | - | - | - | - | 444440207 | - | - | - | - | - | - | - | - | - | - | - | - | - | - | |
| Sushi (turquoise) | - | - | - | - | 444440206 | - | - | - | - | - | - | - | - | - | - | - | - | - | - | |
| Coconut (white) | - | - | - | - | 444440209 | - | - | - | - | - | - | - | - | - | - | - | 444440797 | - | - | |

Glen Dimplex Home Appliances operate a continual product improvement policy, therefore we reserve the right to change the specifications for any product without notice. All dimensions are approximate. This brochure should not replace the installation manual that gives more detailed information. All cooking appliances featured within the brochure are CE marked as complying with the relevant appliance directives, produced under surveillance to BS EN ISO9000 series. Appliances can become very hot and retain their heat for a long period of time after use. Children should be supervised at all times and should not be allowed to touch the hot surfaces or be in the vicinity when in use or until the appliance has cooled. All technical data is taken under laboratory conditions and may vary in use. Ratings are quoted at 230V (also suitable for 220V and 240V). The statutory rights of the consumer are not affected. Every reasonable care has been taken to ensure that descriptions in brochures are accurate. However, specifications may change without prior notice. Please contact customer services before ordering. All electrical appliances must be installed by a qualified electrician using suitable electrical connections.

Stoney Lane, Prescot, Merseyside L35 2XW.
Customer Care 0844 815 3740
Trade Support 0844 248 4147
Customer Support Line 0844 248 4149
www.stoves.co.uk

Stoves is a member of Glen Dimplex Home Appliances Ltd

Designed by hôme Advertising, Leeds

Version 1 August 2010



GDHASTOVBR01

